



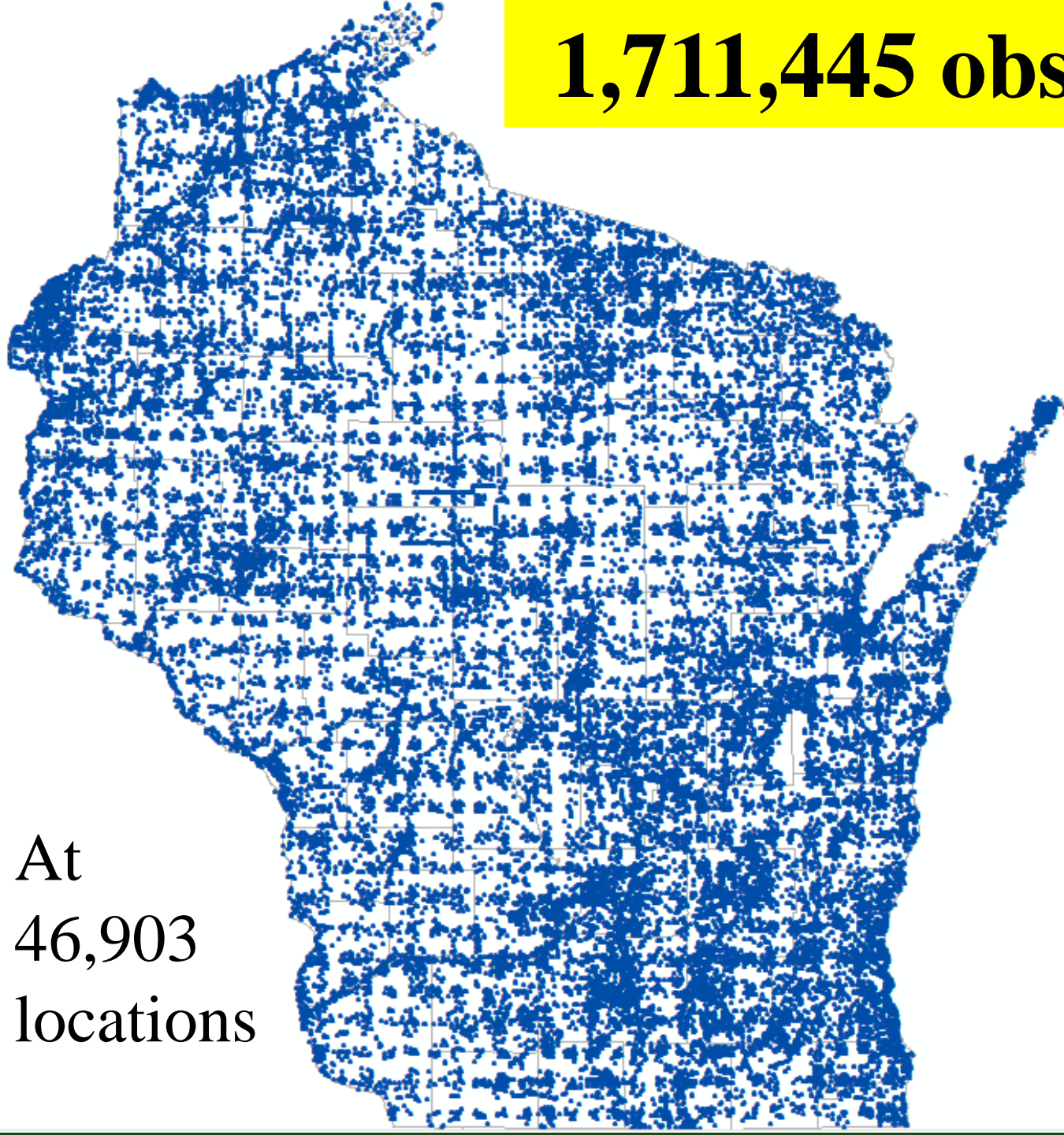
Overview of Atlas Effort: what we've done and what's left to do



Stats to date

- >1,800 observers
- surveyed 5,400 atlas blocks
- some data in 99% of priority blocks
- >95,000 complete checklists
- documenting >7.9 million birds

1,711,445 observations

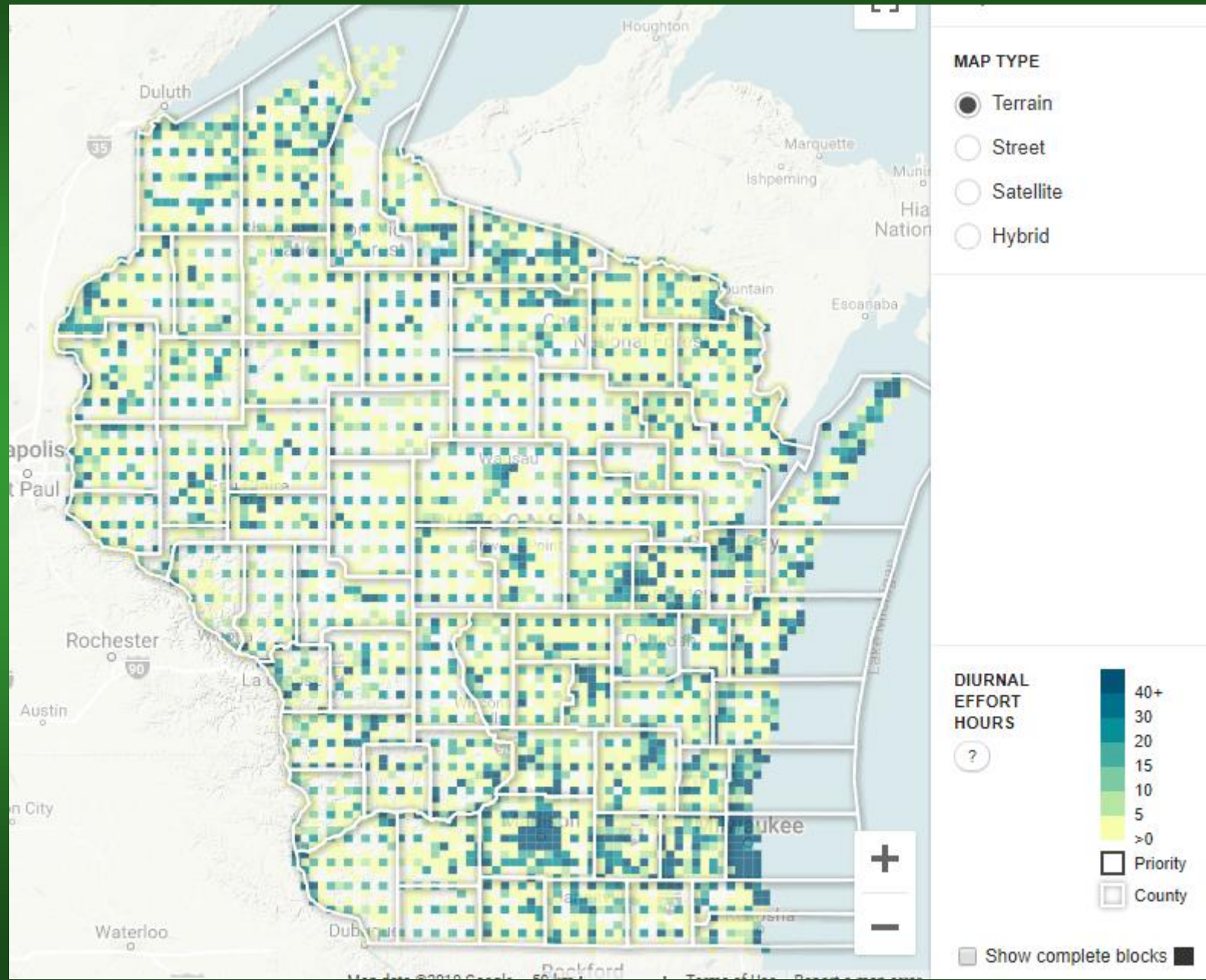


At
46,903
locations

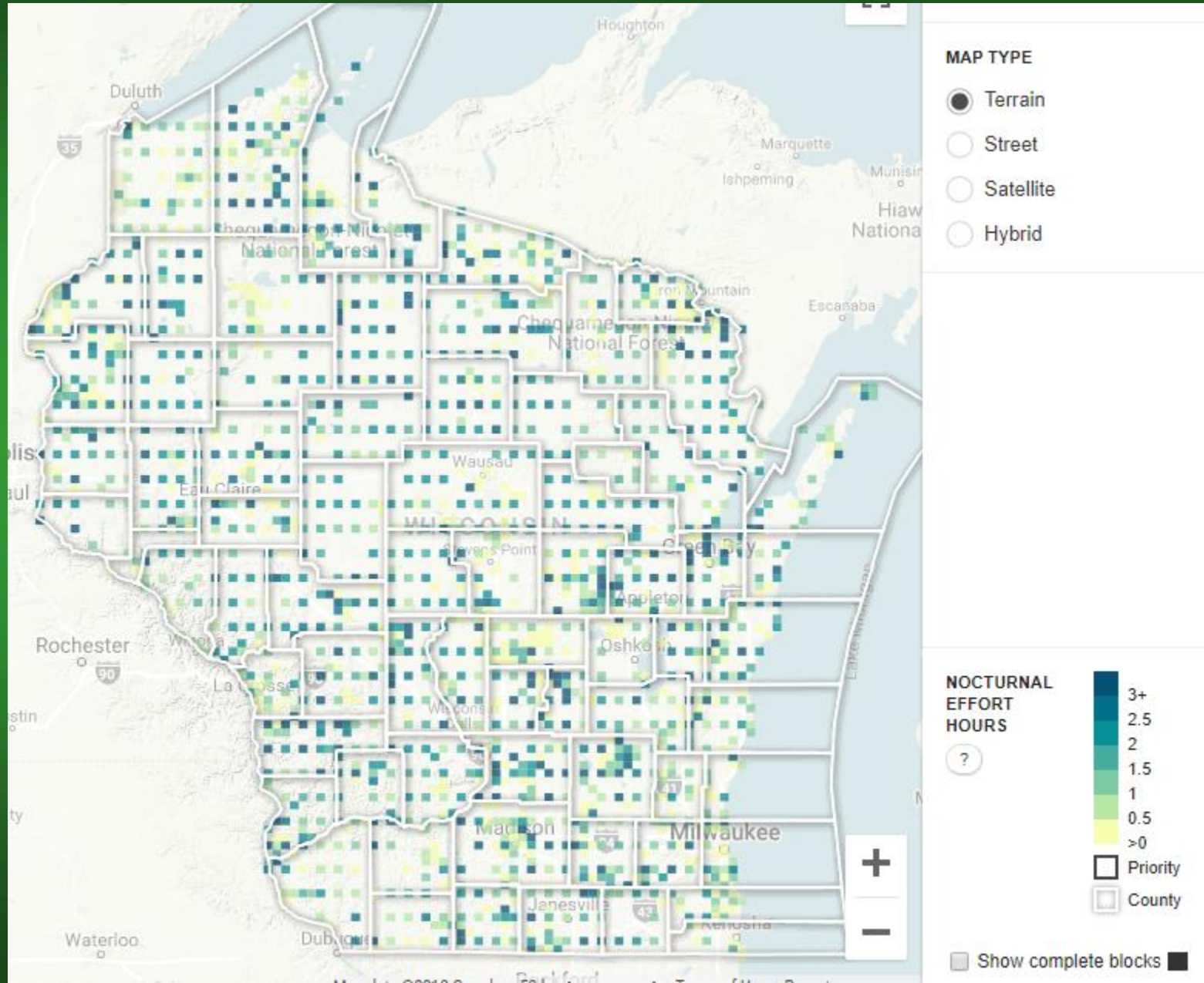
2015 – Feb 2019

Atlas eBird
Checklists

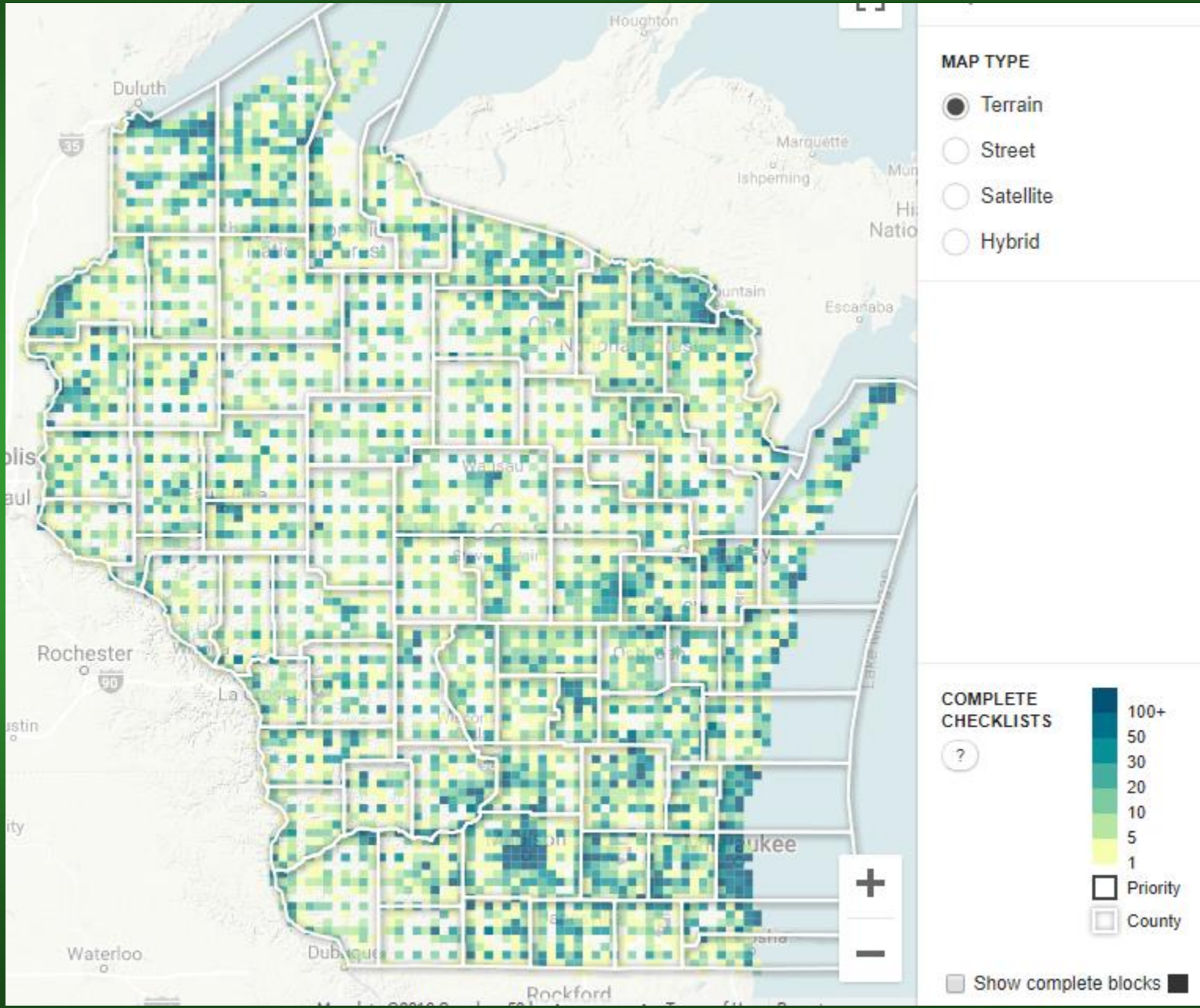
Day hours (aiming for 20+)



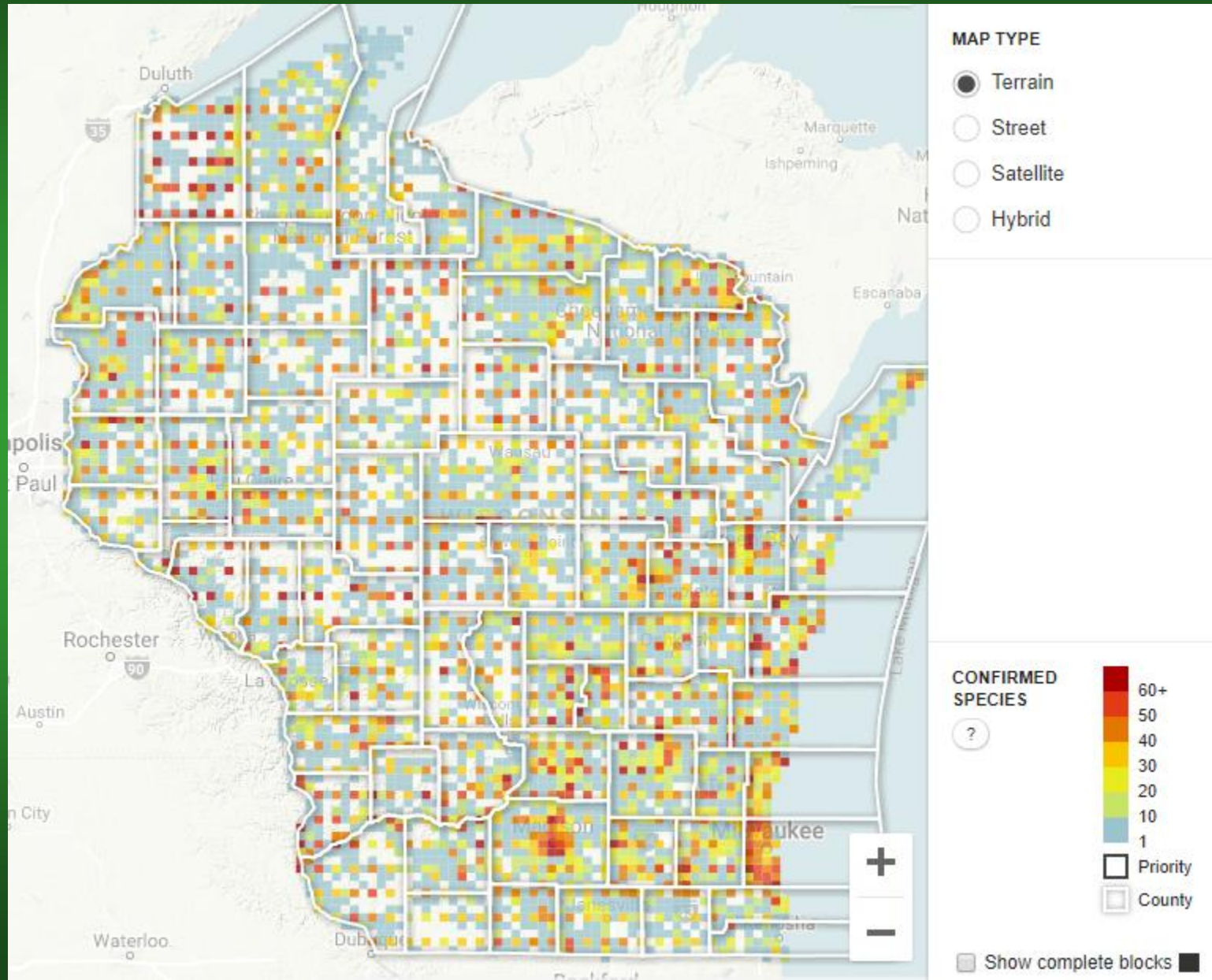
Night hours (aiming for 2 visits ~2 hrs)



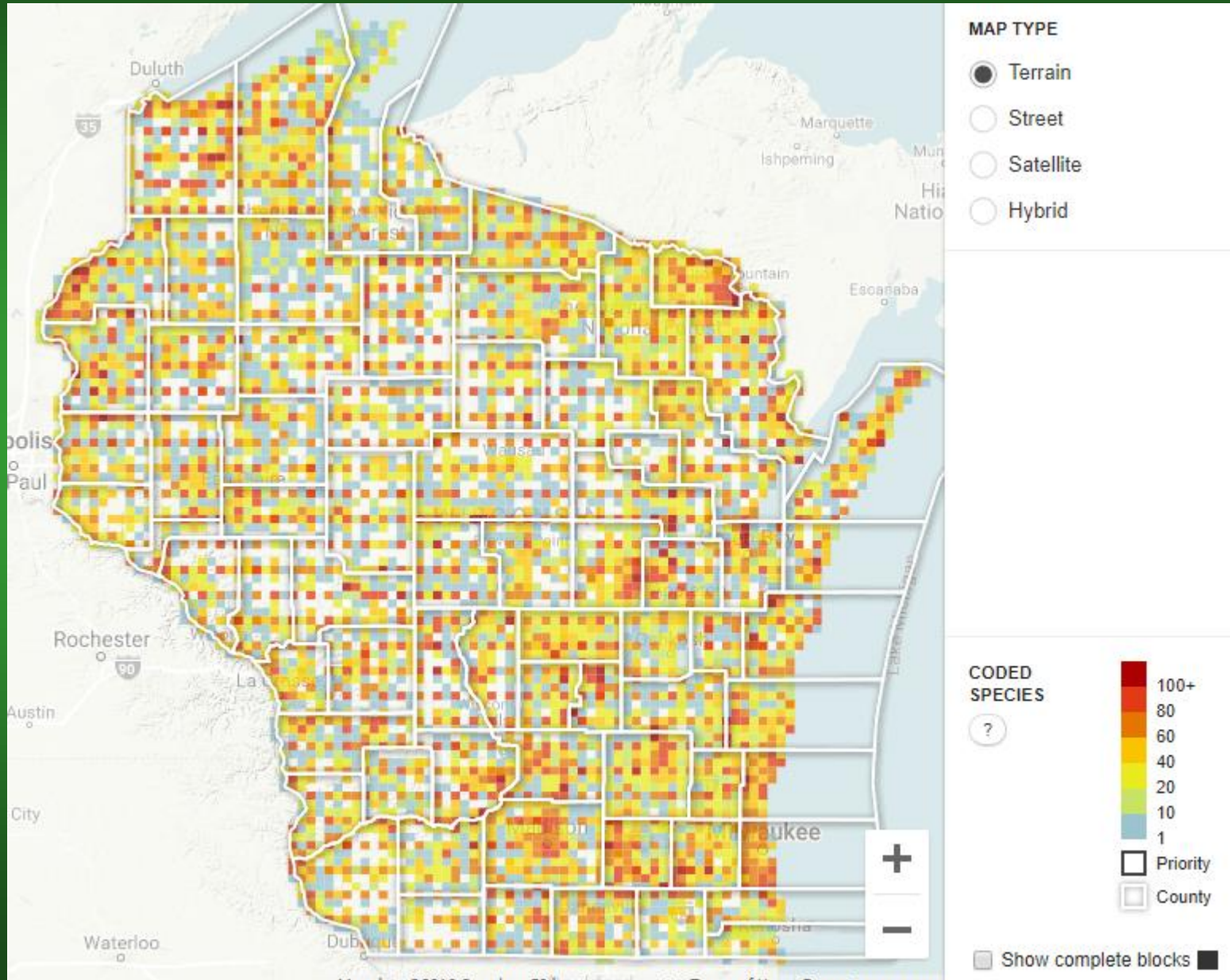
Complete checklists



Confirmed Species

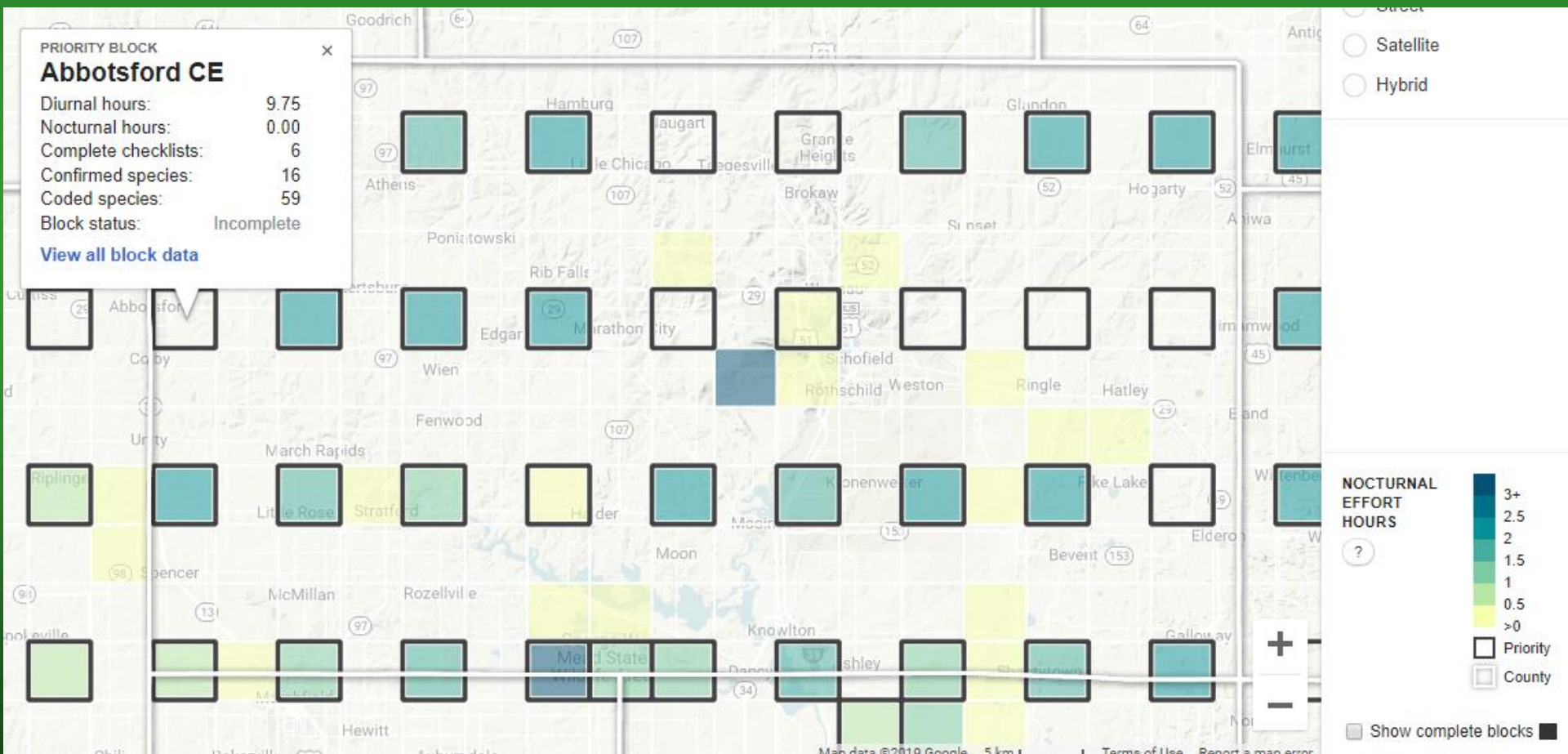


Coded Species



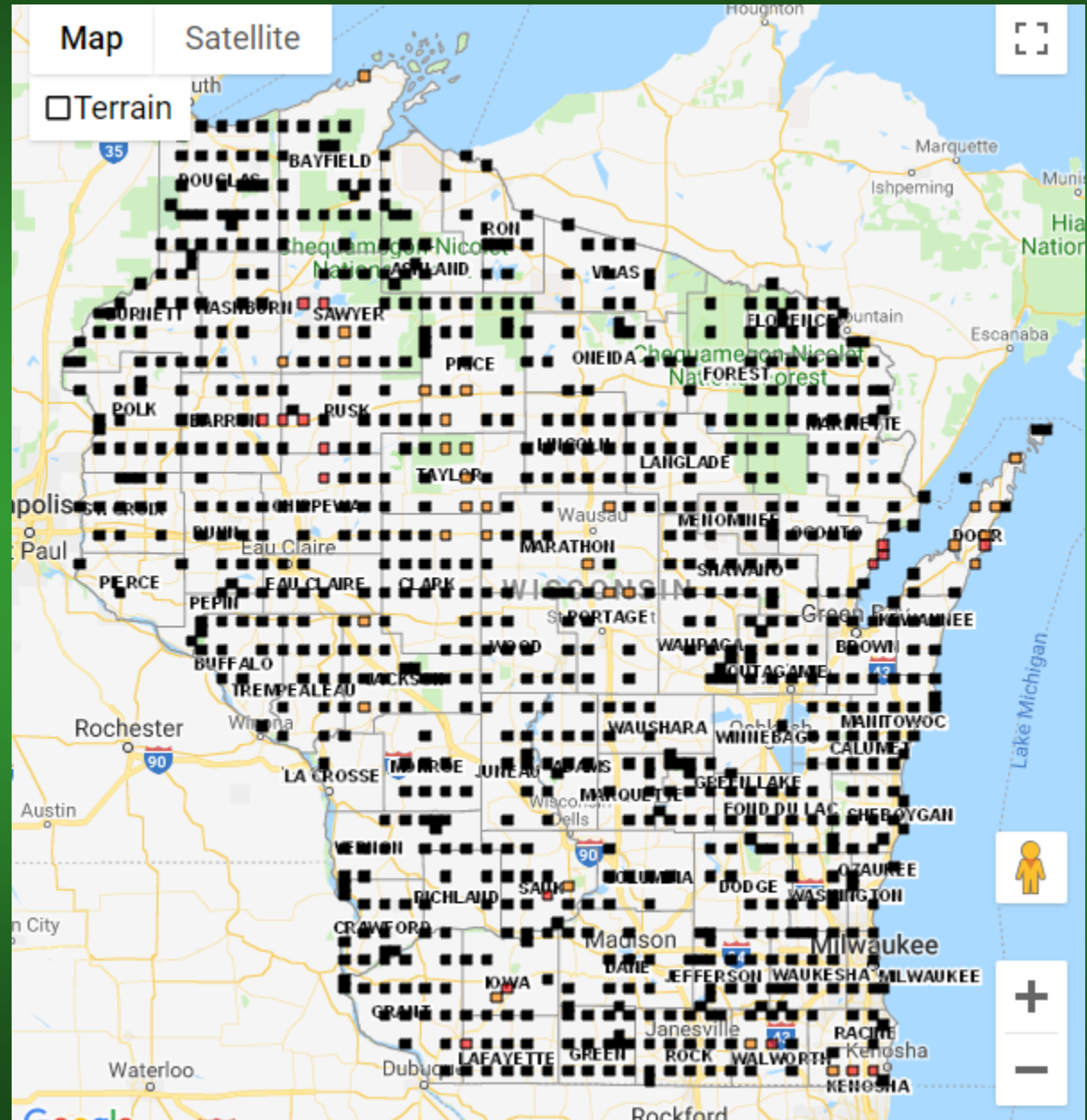
Those are all live eBird effort maps

Explore > Atlas effort map



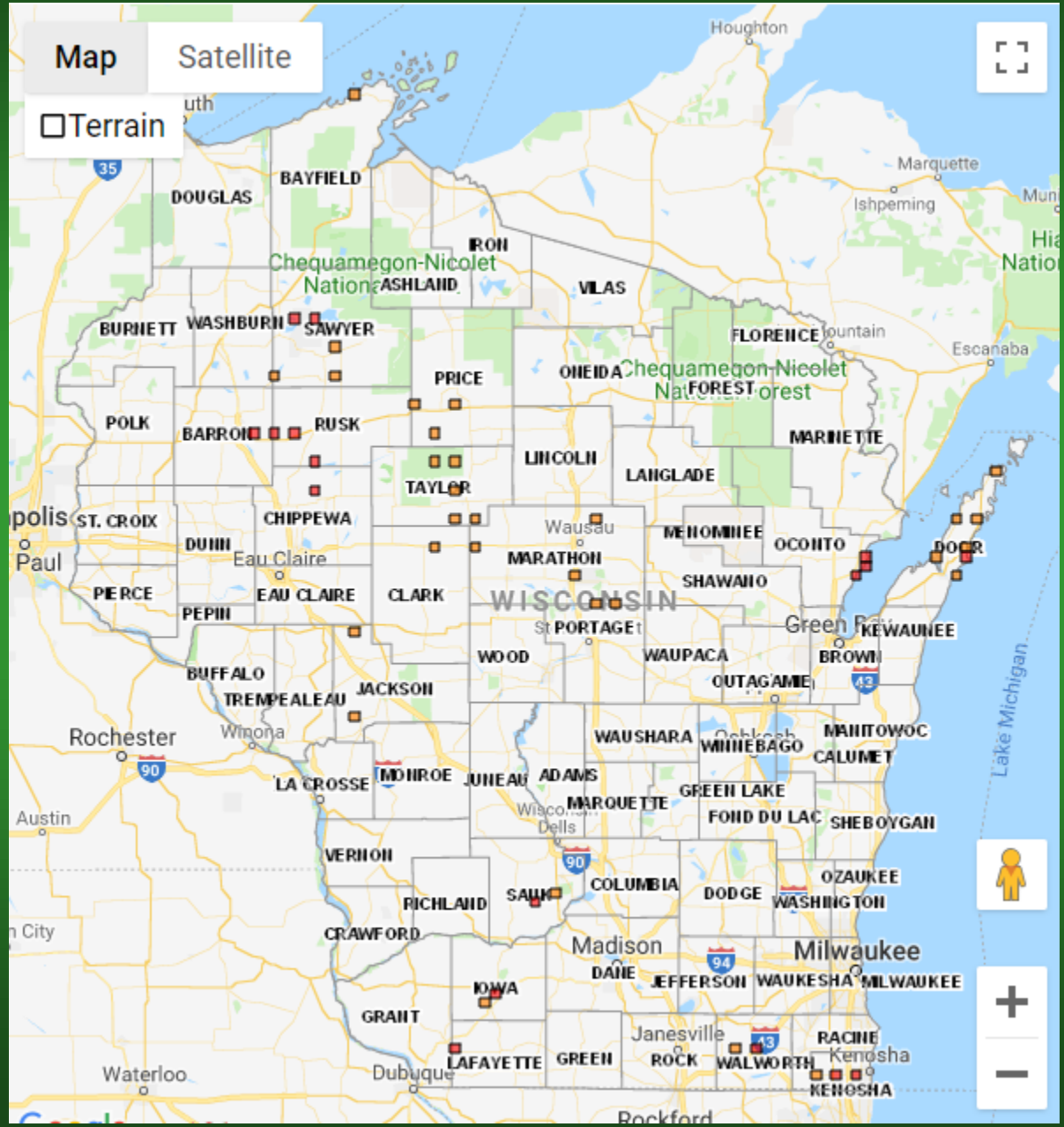
The good news

- 800 (62%) blocks are complete!



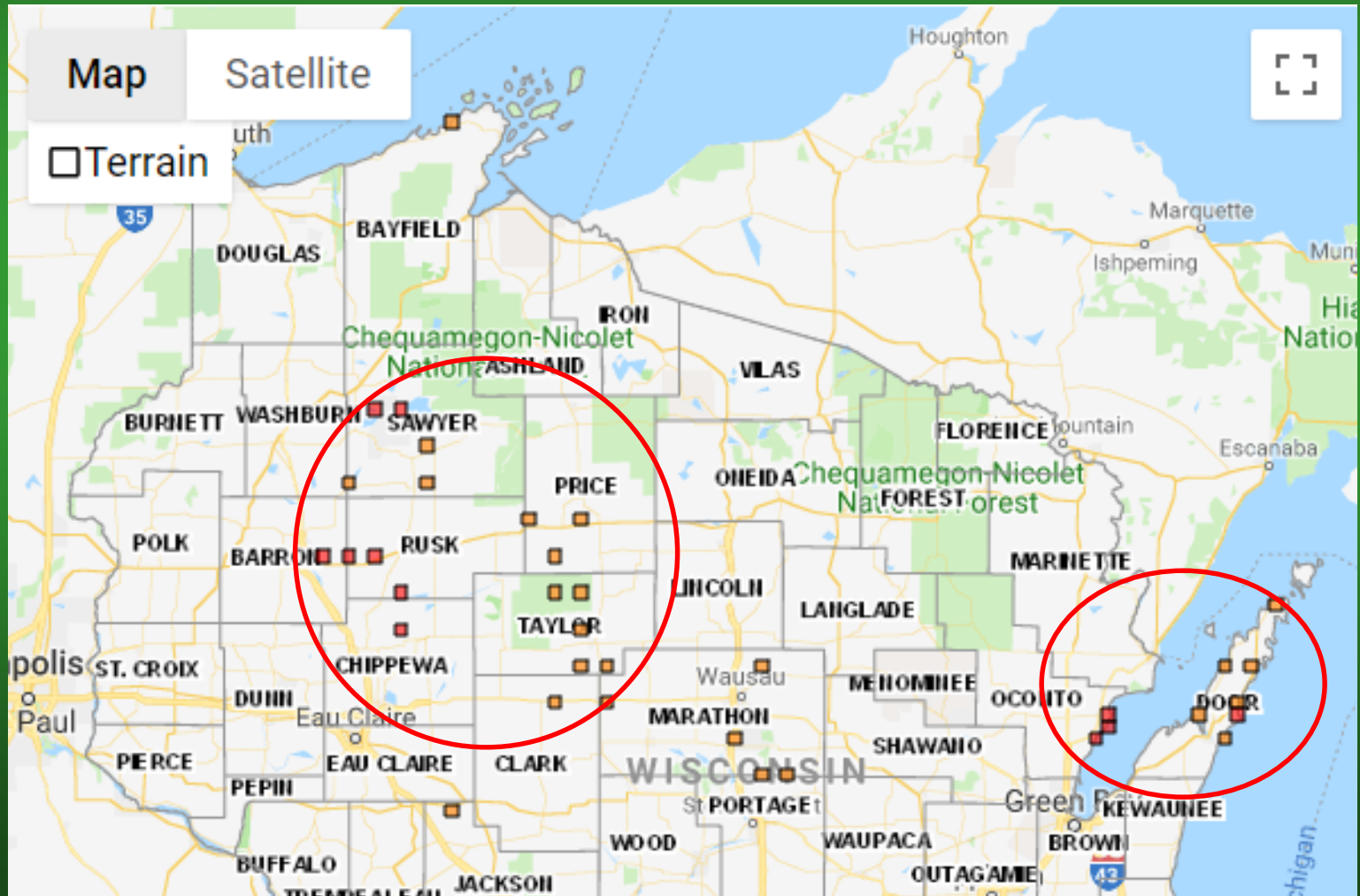
More good news

- Fewer than 50 blocks are unclaimed



Blocks that need a principal atlaser

- Big holes – North-central and Door



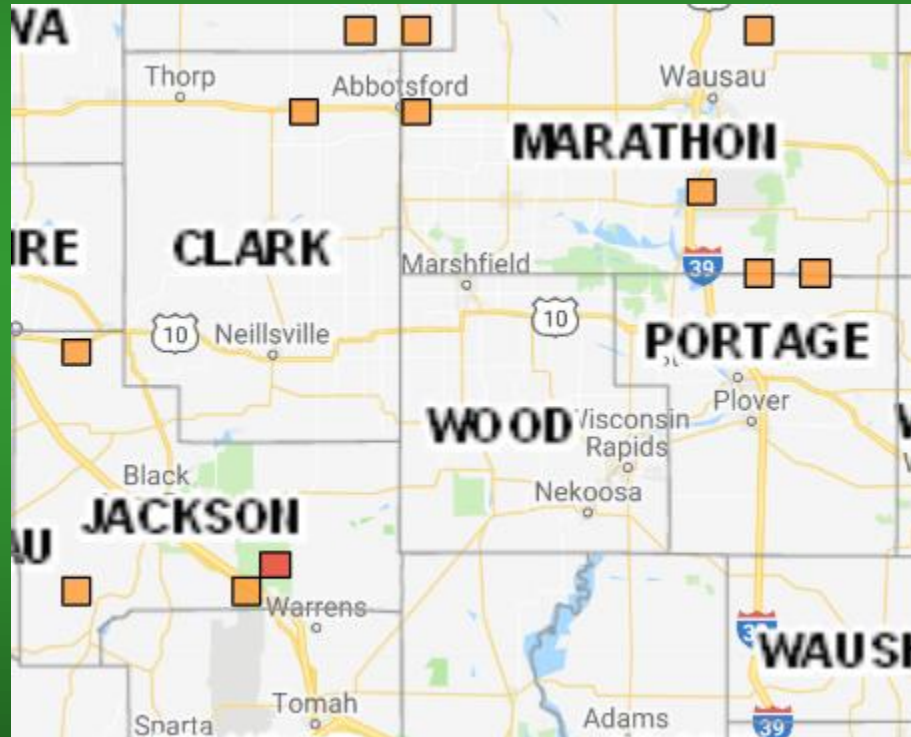
Blocks that need a principal atlaser

- A number of southern blocks



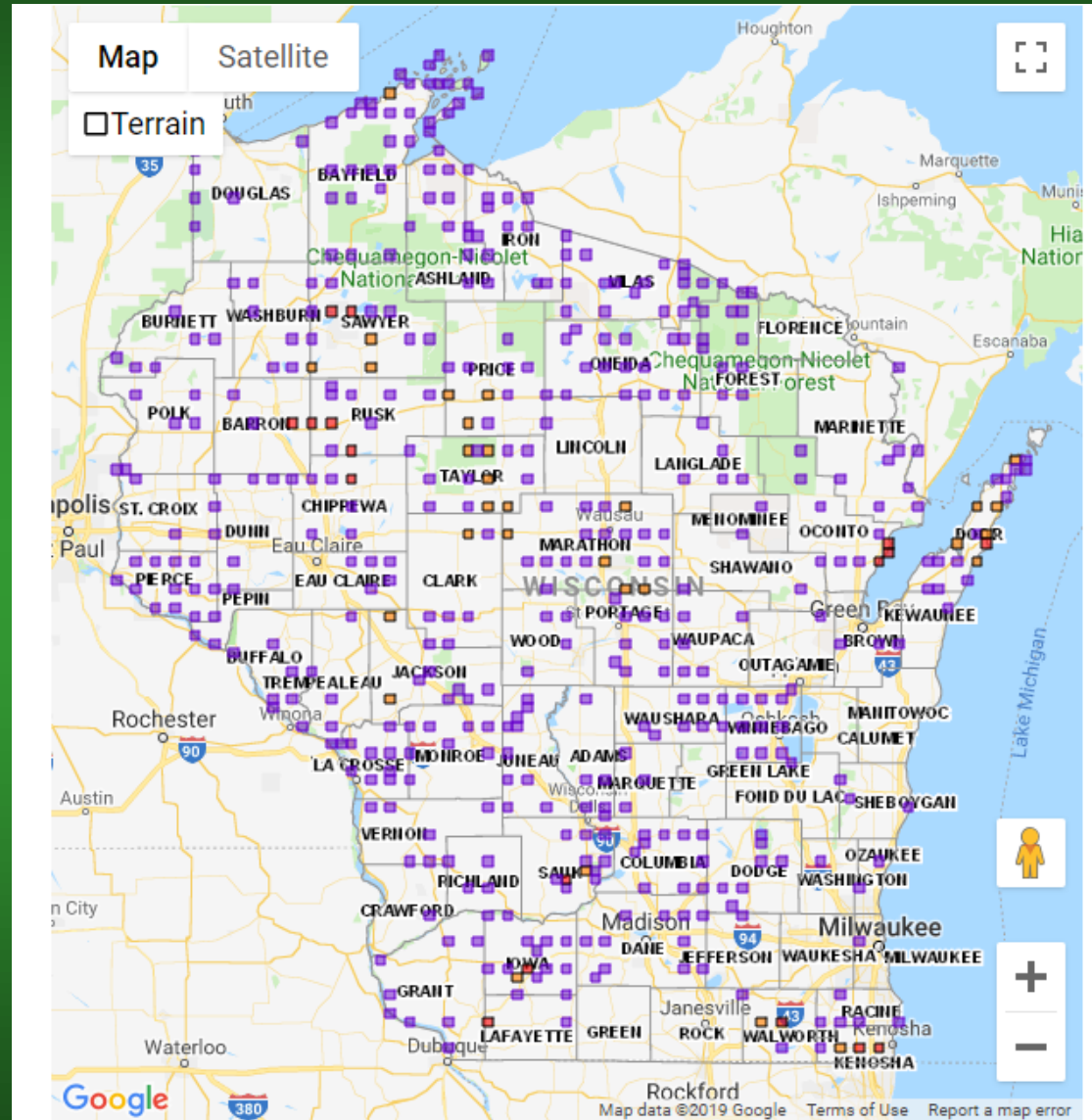
Blocks that need a principal atlaser

- A few central blocks



The reality check

- More than 480 blocks remain unfinished!



- Half Done - Available
- Click to toggle on/off Assigned Blocks
- Not Done - Available
- Survey Block Assigned

The reality check

- We are confident we can assign an atlaser to each block
- *What will make or break us in the final year is our ability to get these blocks actually finished* — and make adjustments when we realize we have lagging blocks

How can you help?

1. Finish your block

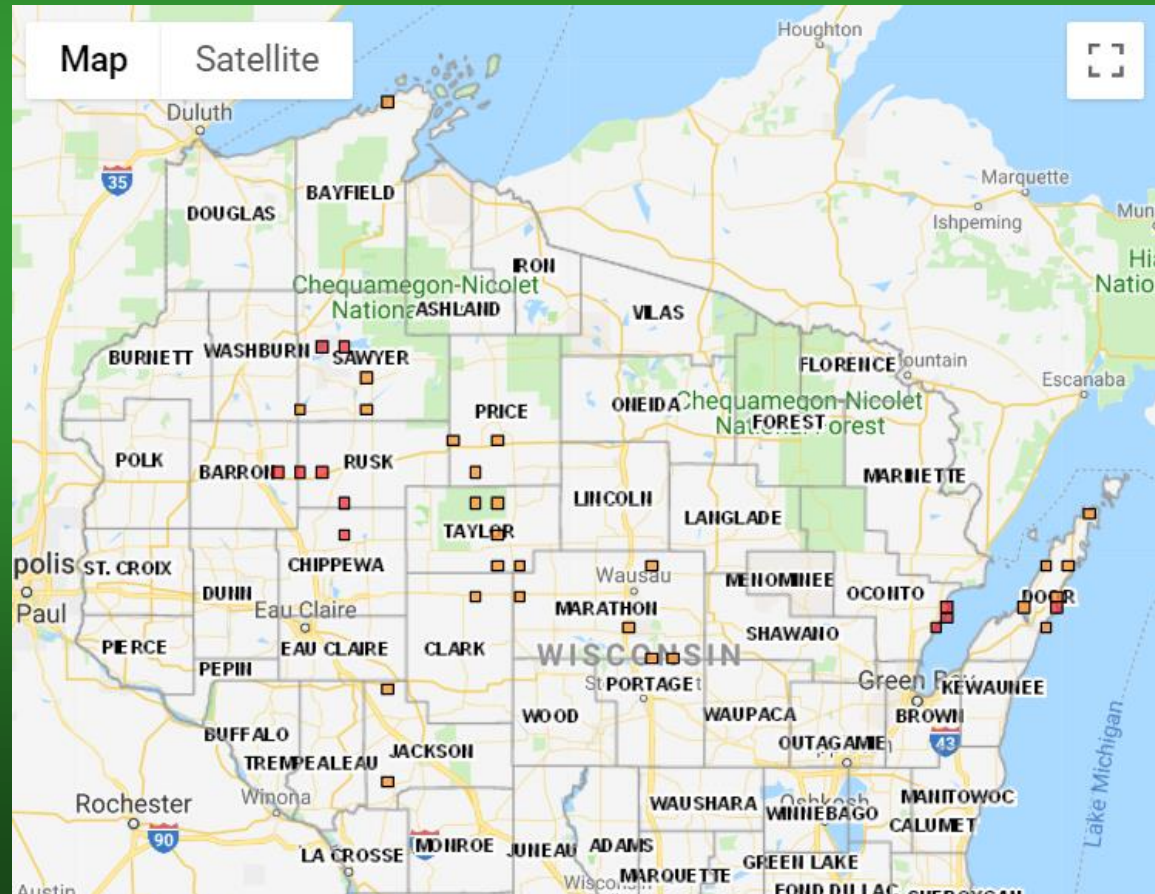
WBBA II Status:

Complete



How can you help?

2. Consider taking on an additional (“red” little effort or “yellow” half done”) block



How can you help?

3. Be part of a team effort

- partner up (check with county coordinator)
- form a group with your bird club
- attend a blitz



Two big blitzes

July 12–14
Sandhill
State
Wildlife
Area
(Babcock)



July 19–21
Kemp
Natural
Resources
Station
(Minocqua)

How can you help?

4. Help us fill last minute needs for lagging blocks and nocturnal visits (more on this in a minute)





Things to remember

- Be realistic – don't overextend yourself
- Data needs to come in on time (you'll see why shortly)
- Good communication is critical

Data checkpoints

1. **June 15:** is your **species list** on pace? (First week of July, ability to detect singing birds falls off sharply)

2. **July 15:** are your **confirmations** on pace? (First week of August, things start winding down)

- This is why timely data entry needed!
- If your block triggers at a checkpoint, we will check with you/CCs but then must deploy...

Atlas Ninjas!

- “Ninjas” help clean up lagging blocks
- Stealth, surprise, costume optional
- Local helpers are key
- We don’t know where we’ll need you yet, but we will need you
- June = species, July = confirmations
- Sign up at upcoming breakout



JUNE VS. JULY EFFORT

Needs June and July Effort



Needs July Effort (confirmations)



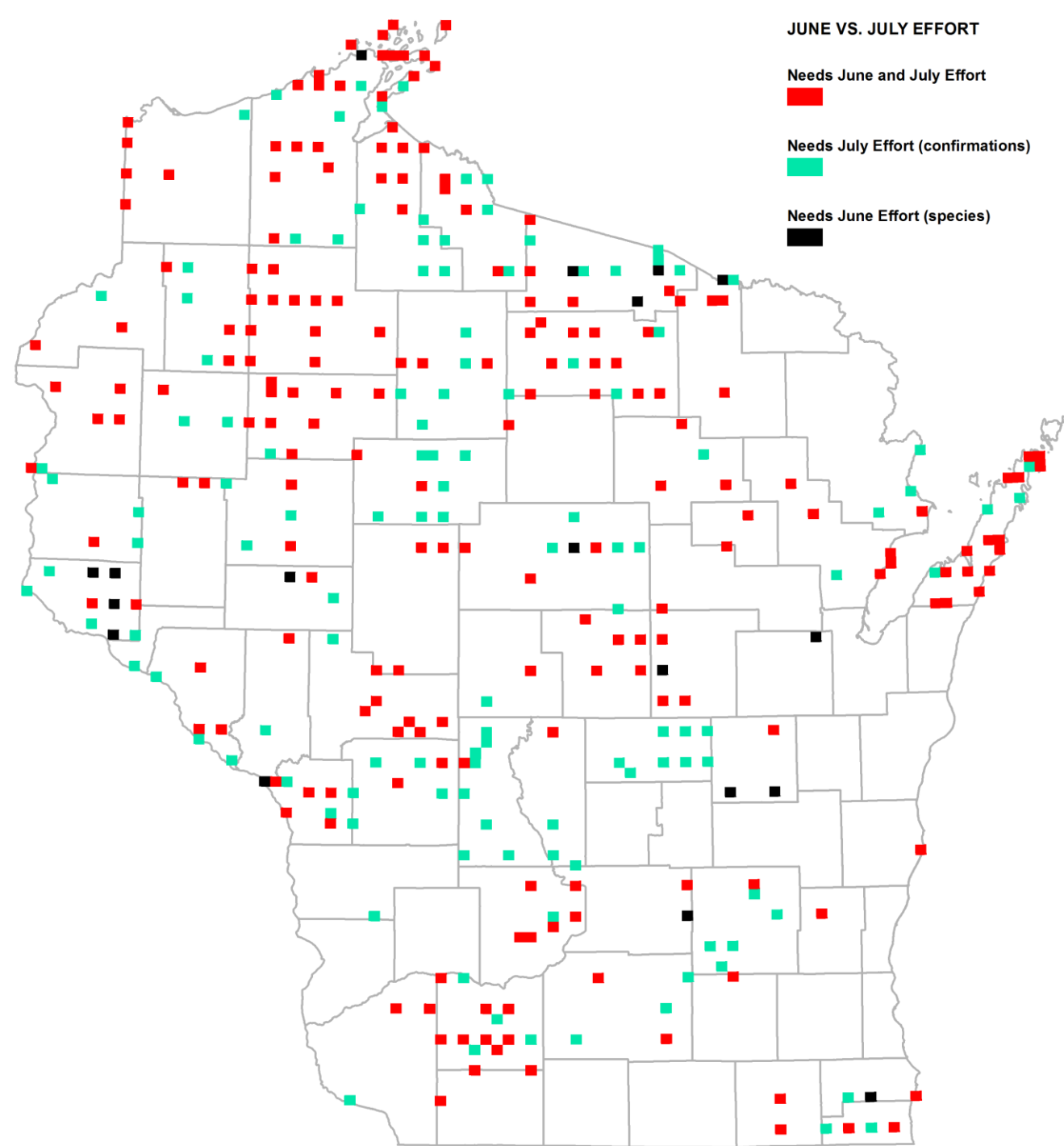
Needs June Effort (species)



June vs. July effort

June = species

July = confirmations



This map will be at
each breakout table

Night Owls

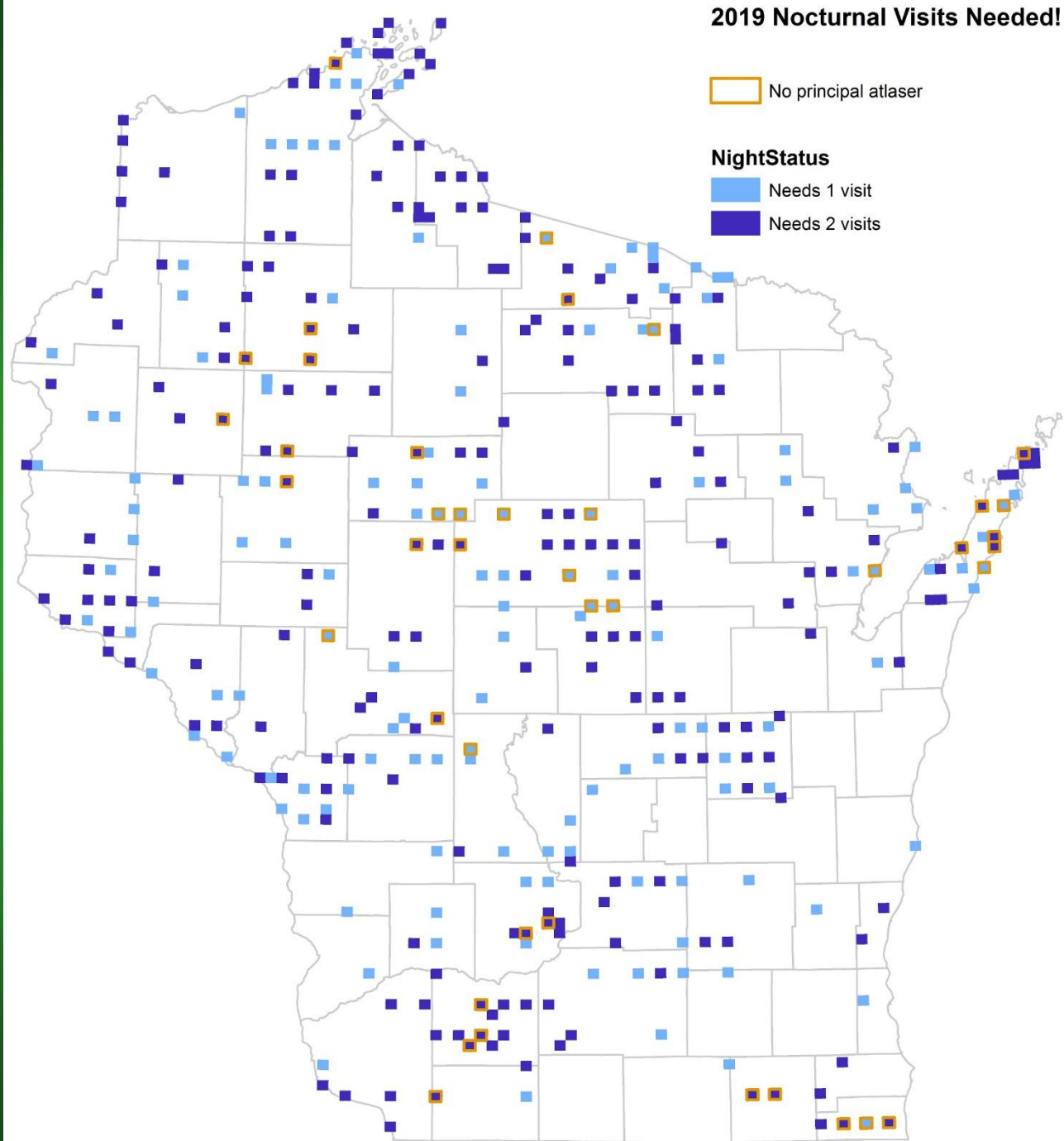
- “Night Owls” are atlasers that help clean up lagging nocturnal effort
- April is a great time for night visits
- Ask your CC what you can do locally
- There will be signup sheets at upcoming breakout
- Less commitment than a whole block



Remaining Nocturnal Effort

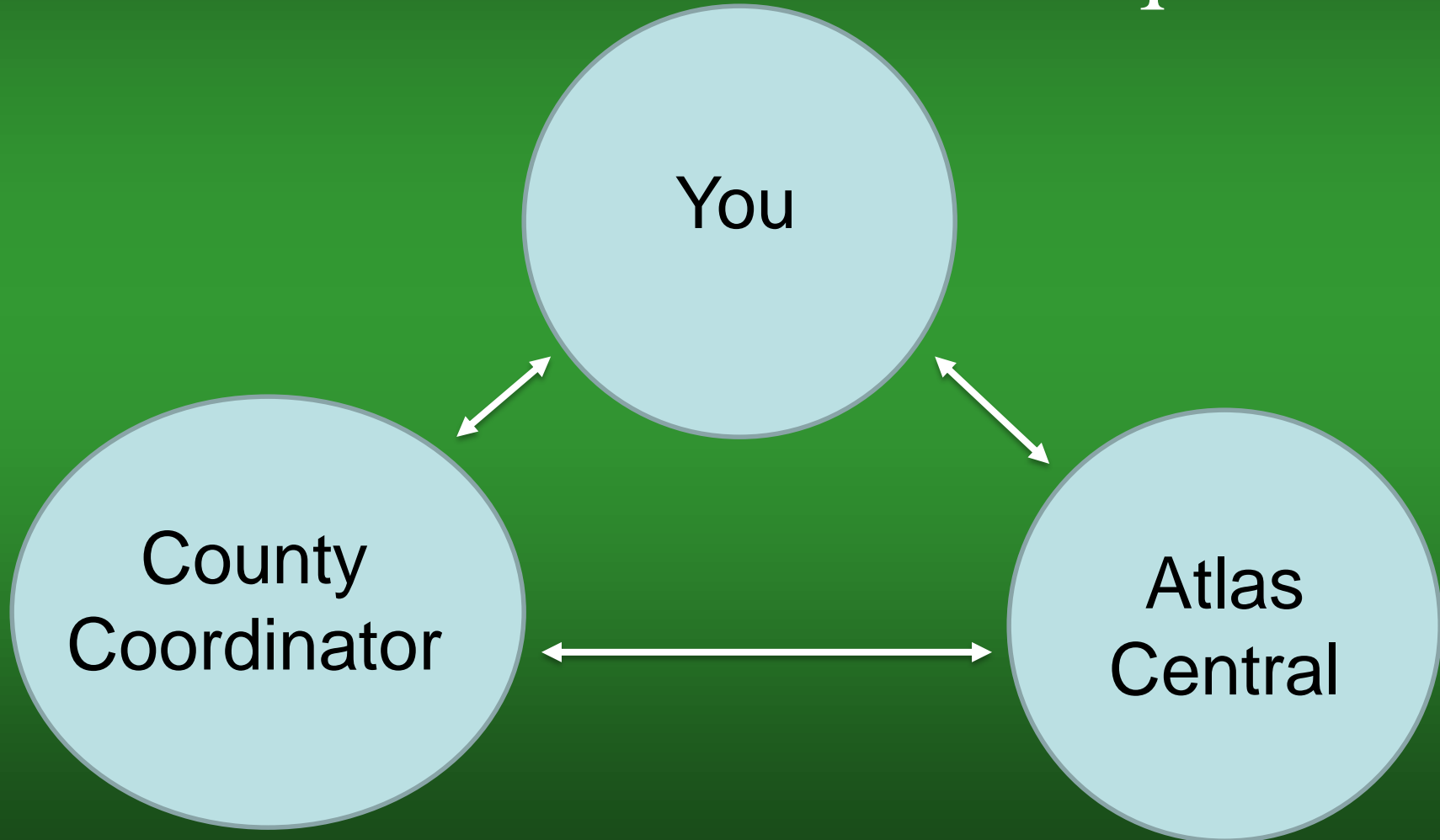
Some blocks will
finish as soon as they
get night visits

This map will be at
each breakout table



Things to remember in final season

- Good communication is required



Things to remember in final season

- We should all work to monitor your local blocks closing
 - Use the eBird block tables



Marathon [Change Location](#)

Wisconsin

Wisconsin BBA 2015-2020 [Set](#)

Overview **Blocks** Recent Visits

All Blocks 183 **Priority 36** Complete 16 Incomplete 167

NAME	DIUR HR	NOCT HR	OBSV	POSS	PROB	CONF	TOTAL	COMP
Marathon SW CE (P)	3.92	0.08	5	24	9	10	43	
Marathon CE (P)	13.91	0.00	22	42	12	14	68	
Abbotsford CE (P)	9.75	0.00	3	16	27	16	59	
Wausau East CE (P)	2.75	0.00		11	3	18	32	
Brokaw CE (P)	20.83	0.00	20	16	25	20	61	
Hatley CE (P)	12.88	0.00	5	13	35	25	73	
Ringle CE (P)	12.50	0.00	3	11	26	31	68	
Rosholt NW CE (P)	9.72	1.75	4	13	25	32	70	
Athens CE (P)	15.97	1.62	4	17	24	33	74	

Things to remember in final season

- If you are falling behind, let us know ASAP
- If you have extra time, reach out



Things to remember in final season

- Get your checklists in ASAP
- Our entire system relies on block lists being up to date!



Breakout session

- Splitting into 9 regions
- Learn about open blocks. Discuss with CCs, come to Nick to sign up
- Ask CCs about already claimed blocks that could use extra help
- Sign up to be a Ninja/Night Owl

Breakout regions

