

A photograph of two birds perched on a tree branch. The bird on the left is a white-headed eagle with a dark eye and is holding a large insect in its beak. The bird on the right is a dark-colored bird, possibly a hawk or falcon, looking towards the first bird. The background is a blurred green and blue, suggesting a natural outdoor setting.

# Exciting Results from the First Four Seasons of WBBA II



# Results to date

- >1850 observers
- Data in 5,400 atlas blocks
- Some data in 99% of priority blocks
- Submitted 95,000 complete checklists
- Documenting > 7.9 million birds



# 12 species not confirmed during WBBA I



Bufflehead

Canvasback

Whooping Crane

King Rail

Mississippi Kite

Eurasian Collared-Dove

Great Tit

White-eyed Vireo

Yellow-throated Warbler

Kirtland's Warbler

Blue Grosbeak

European Goldfinch

# Only species confirmed for first time during WBBA II

Mississippi Kite

Rock County

Produced young  
in 2015 and  
2016

Not too  
surprising given  
birds in  
Rockford IL



# 12 species not confirmed during WBBA I



Endangered  
Species with  
consistent  
populations:

Whooping Crane  
Kirtland's Warbler

# 12 species not confirmed during WBBA I

Rare north/west species:

Bufflehead

Canvasback



# 12 species not confirmed during WBBA I



Rare southern species:

Mississippi Kite

King Rail

White-eyed Vireo

Yellow-throated Warbler

Blue Grosbeak

# 12 species not confirmed during WBBA I

European invaders:

Eurasian Collared-Dove

Great Tit

European Goldfinch



Kevin DeBoer



# Only confirmed in 1 block

Bufflehead (Atlas I: 0 blocks) Matt Berg

Canvasback (0) Tom Ziebell

Mississippi Kite (0) Rock Co. observers

Cattle Egret (3) Stuart Malcolm/Ross Mueller

King Rail (7) Many obs.

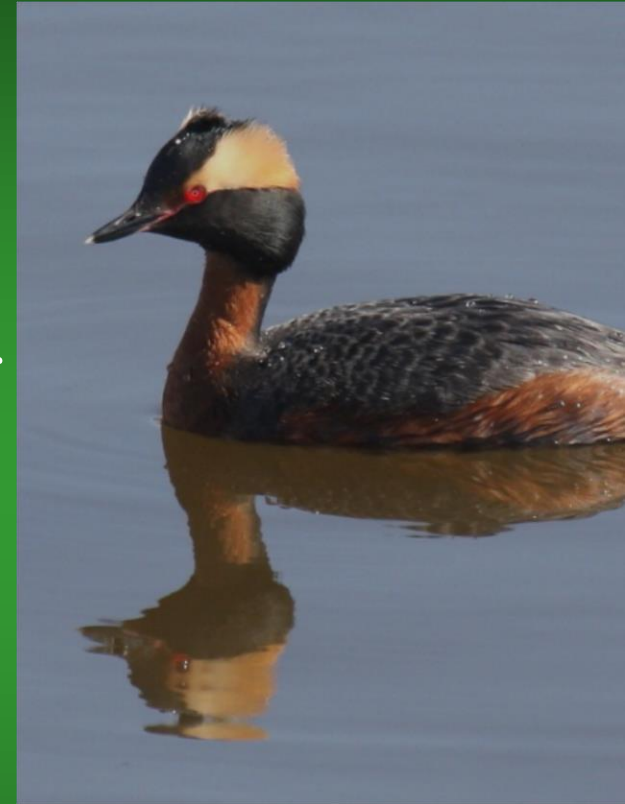
Horned Grebe (1) Daryl Christensen

Black-backed Woodpecker (12) Bob Spahn

Gray Partridge (25) John Kivikoski

LeConte's Sparrow (11) Randy Hoffman; (13 probs though)

Worm-eating Warbler (2) Randy Hoffman



# Surprising Finds

## Laughing Gull

A pair was present in Manitowoc during late May and June. Then in July a juvenile is seen. But is it a local bird?

Not reported in WBBA I



Jay Watson

# Surprising Finds

White-winged Dove

On territory all summer in  
Lafayette County

Some distance from the  
nearest breeding (but  
record for IA)

Not reported in WBBA I



Quentin Yoerger

# Surprising Finds

American Three-toed  
Woodpecker

Ryan located pair early  
season in Bayfield County

Seen on several occasions

Potential incubation (only  
one bird seen at a time)

Unclear if early nest failed  
or birds left

Not reported in WBBA I



# Most Likely Yet to be Confirmed in WBBA II

## Confirmed in >5 blocks in WBBA I but never in II



- White-winged Crossbill was confirmed in 7 blocks during the first atlas
- 11 possibles during WBBA II
- We need an irruption (it seems unlikely?)

# Most Likely Yet to be Confirmed in WBBA II

## Confirmed twice in WBBA I but not II

Northern Pintail – 1 Probable

Yellow-crowned Night-Heron – 1 Possible

Yellow Rail – 4 Probable

Barn Owl – 2 Possible

Nelson's Sparrow – 3 Possible

Philadelphia Vireo – 2 Possible



# Most Likely Yet to be Confirmed in WBBA II

## Confirmed once in WBBA I but not II

Lesser Scaup (1) several Possible

Western Grebe (1) 4 Observed

Snowy Egret (1) 7 Observed

Great Black-backed Gull (1) many Observed

Great Gray Owl (1) 2 Possible

Western Kingbird (1) 11 Observed

Rusty Blackbird (1) No breeding season reports



# Birds we were really hoping to confirm

(Pay attention!)

Prairie Warbler never confirmed in WI

Probable at 5 locations during WBBA I

3 Probable (S7) in WBBA II



Joel Trick



# Birds we were hoping to confirm

Eurasian Tree Sparrow  
never confirmed breeding  
in WI

Pushing north

Increasing, now annual

Check further away from  
farms, into woodlots?



# Birds we were hoping to confirm

Chuck-will's-widow  
never confirmed  
breeding in WI

One bird singing  
persistently in May  
and June in Jefferson  
County in 2015 and  
2016

Not reported in  
WBBA I



Dick Daniels

# Birds we were hoping to confirm

Boreal Warblers:

Wilson's – 1 Prob, several Poss

Tennessee – 5 Possibles

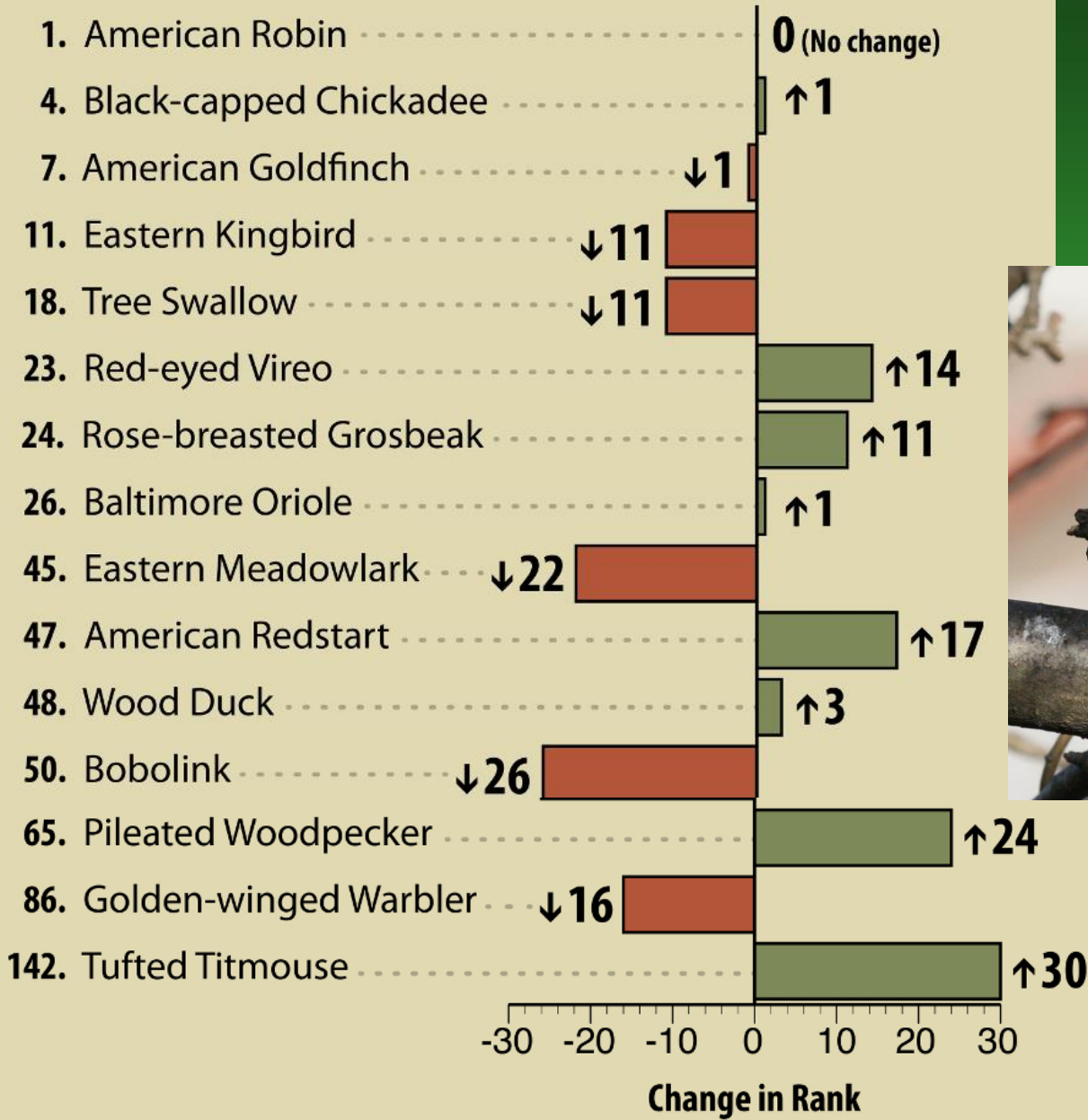
Bay-breasted – No Possibles



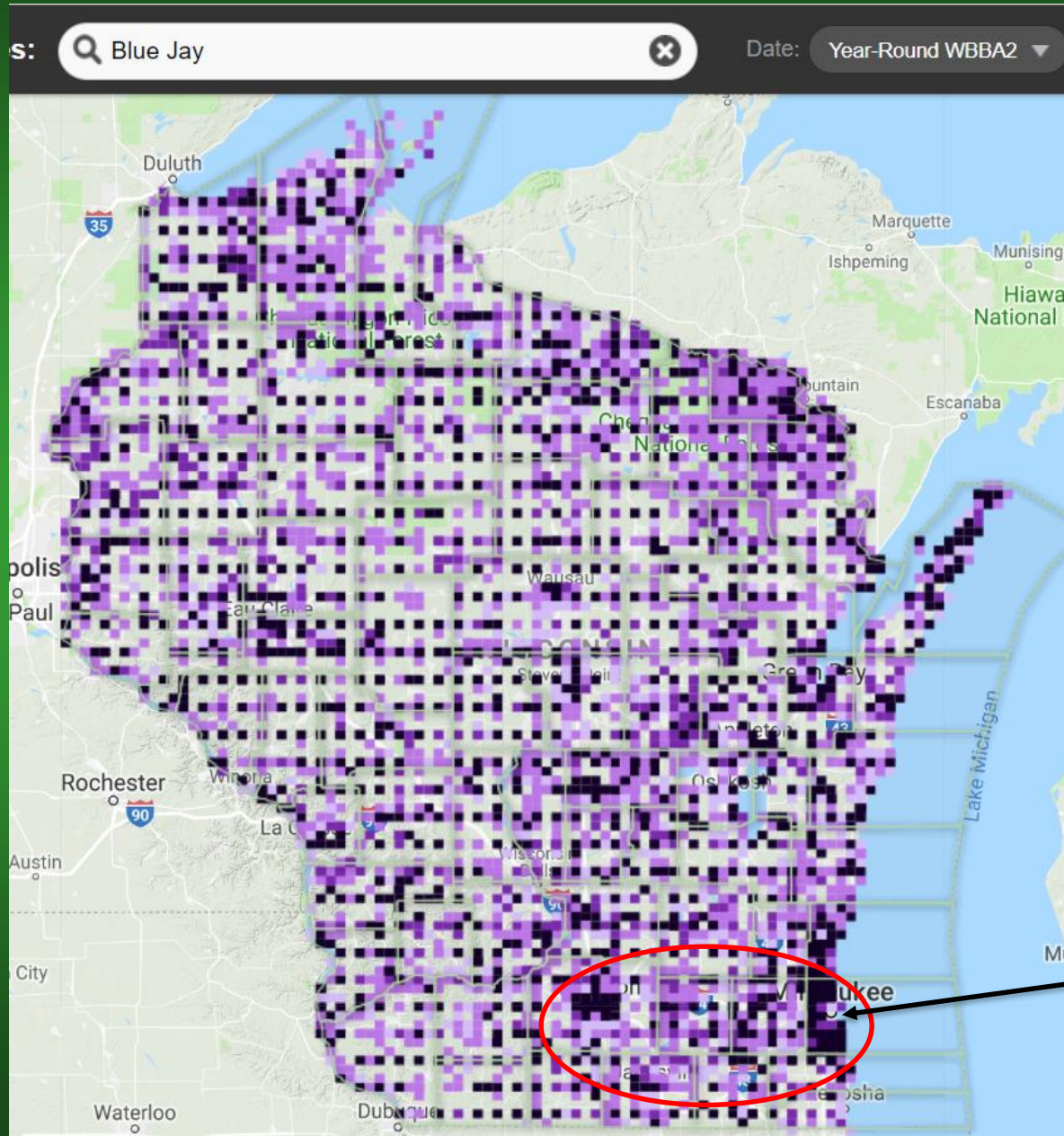
# Atlas I Rank

Tree Swallow by ...

# Signs of change



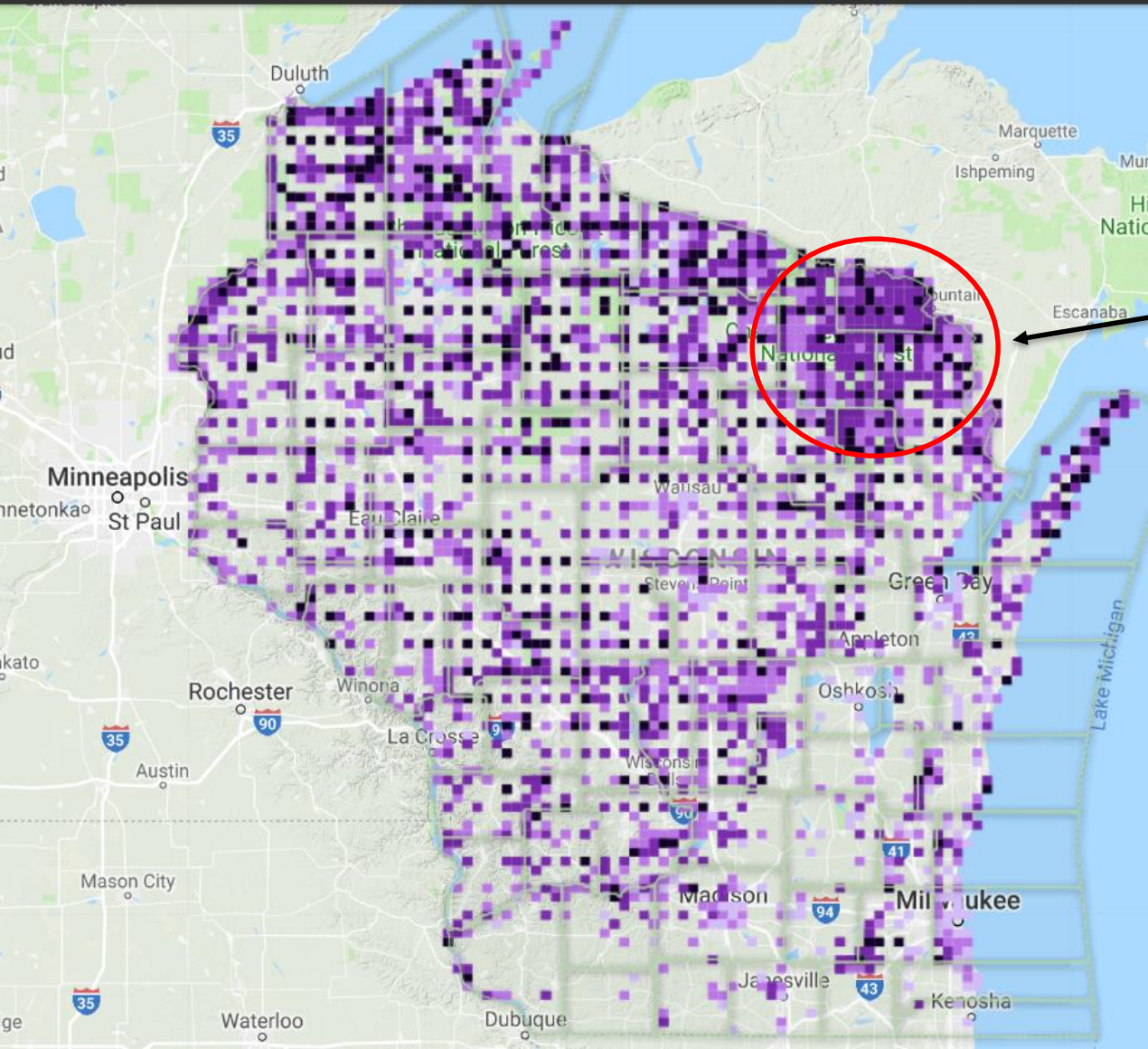
# Results maps – note coverage biases



Lots of people

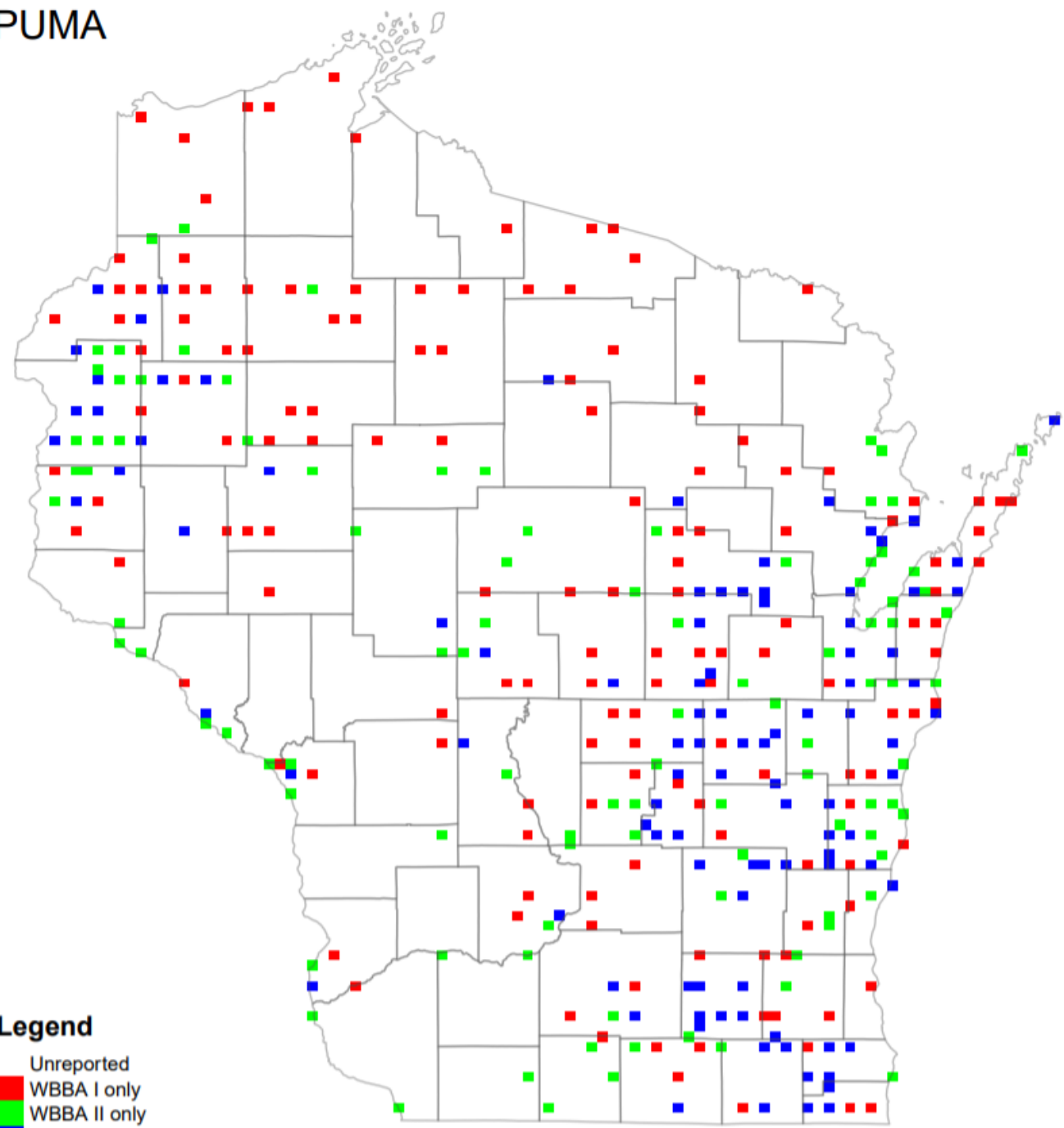
# Results maps – note coverage biases

Q Ovenbird X Date: Year-Round WBBA2 Location:



Kay Kavanagh

PUMA



**Legend**  
Unreported  
WBBA I only  
WBBA II only  
Both

A fair  
comparison:  
Priority  
Blocks  
with  
good  
coverage

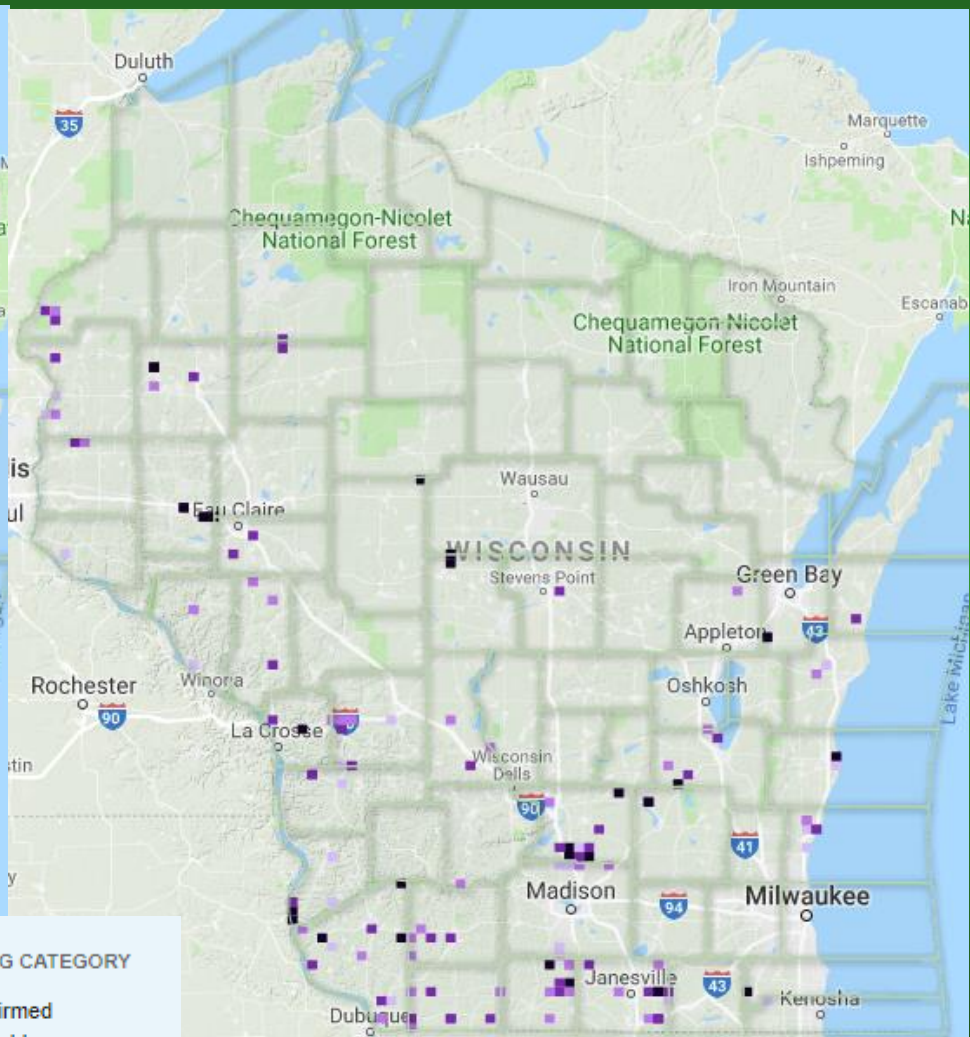
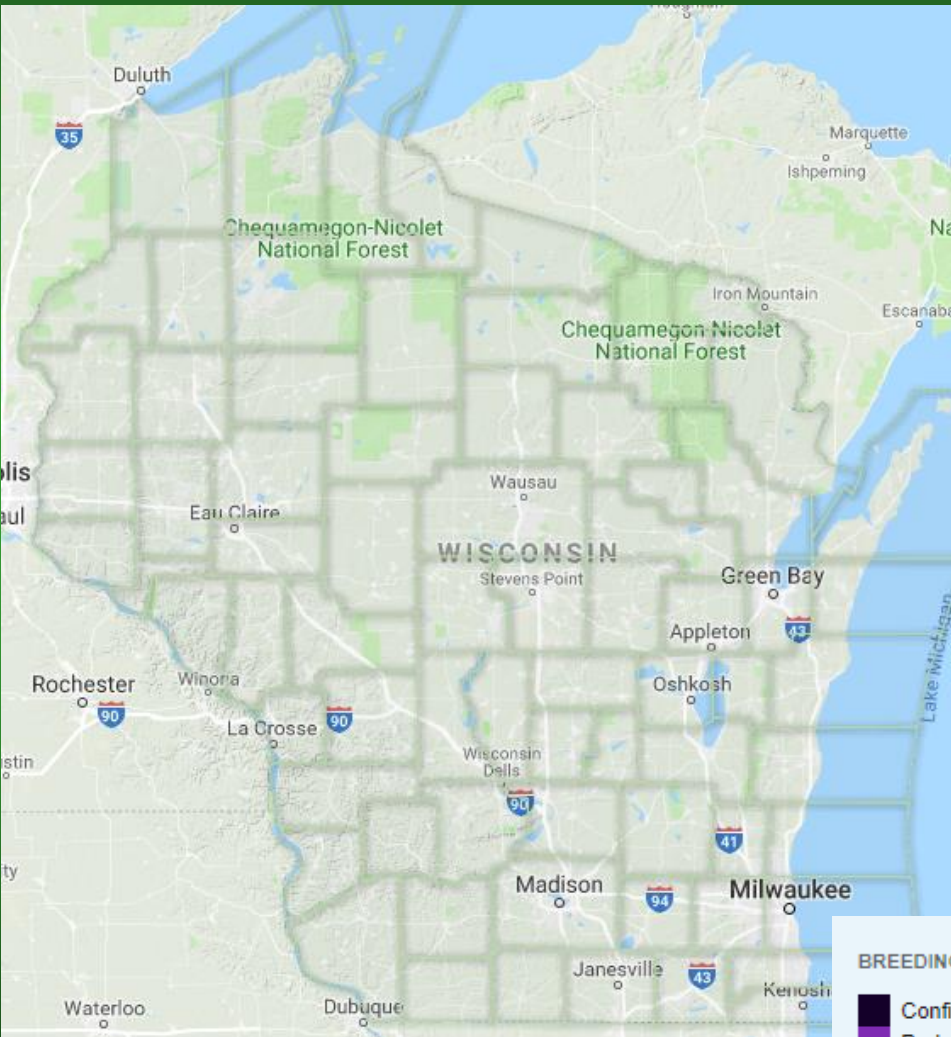


Tom Prestby

# Results to date

## Atlas I

## Atlas II



**BREEDING CATEGORY**

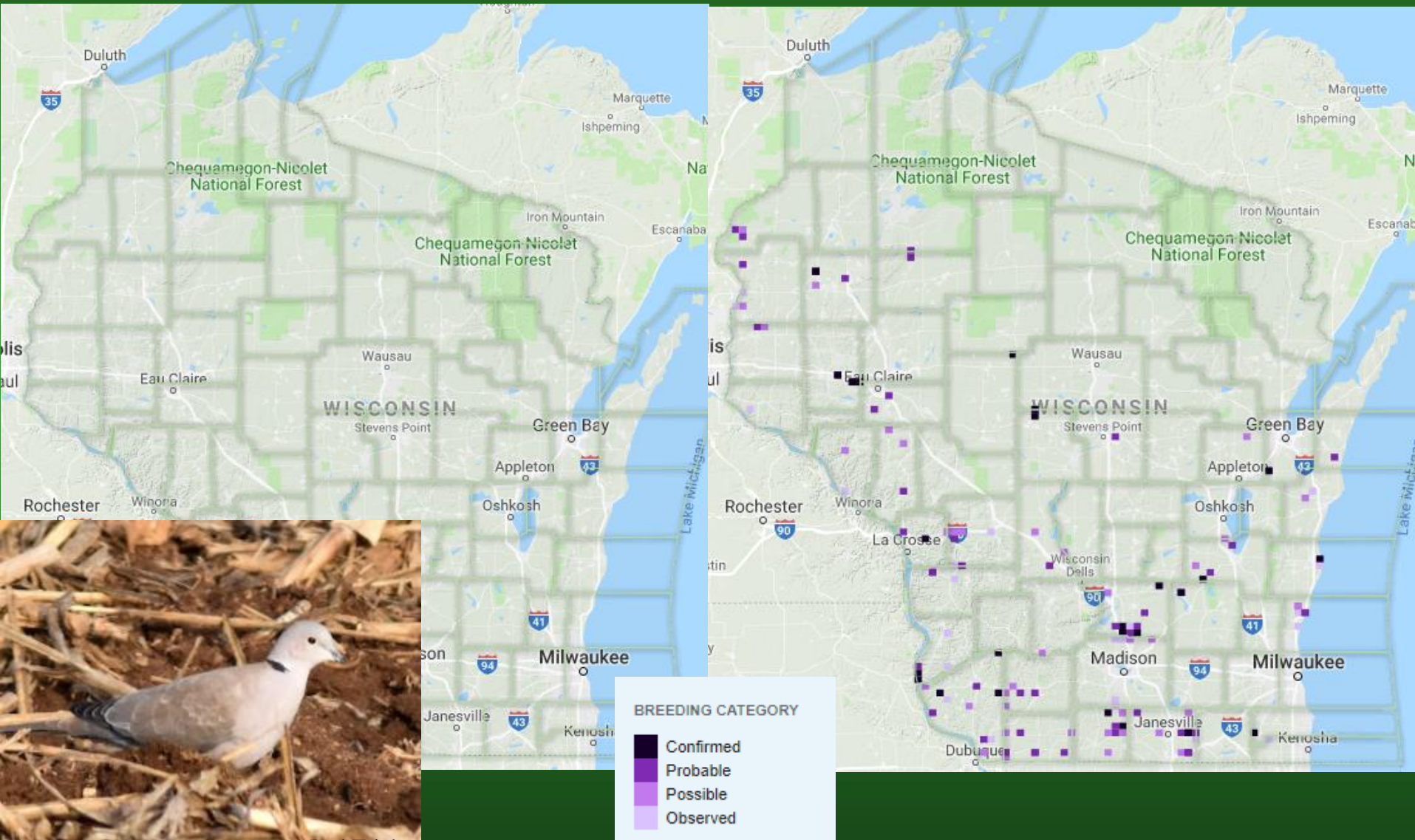
- Confirmed
- Probable
- Possible
- Observed



# Results to date

## Atlas I

## Atlas II

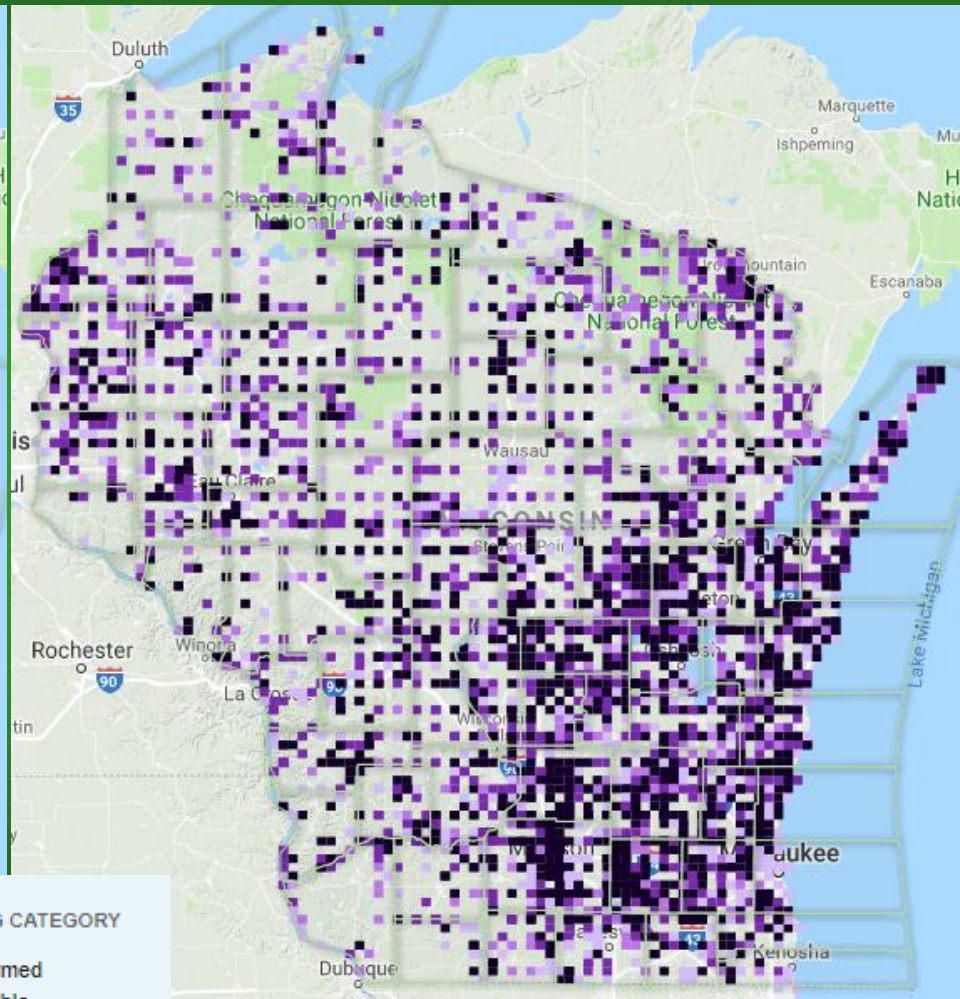
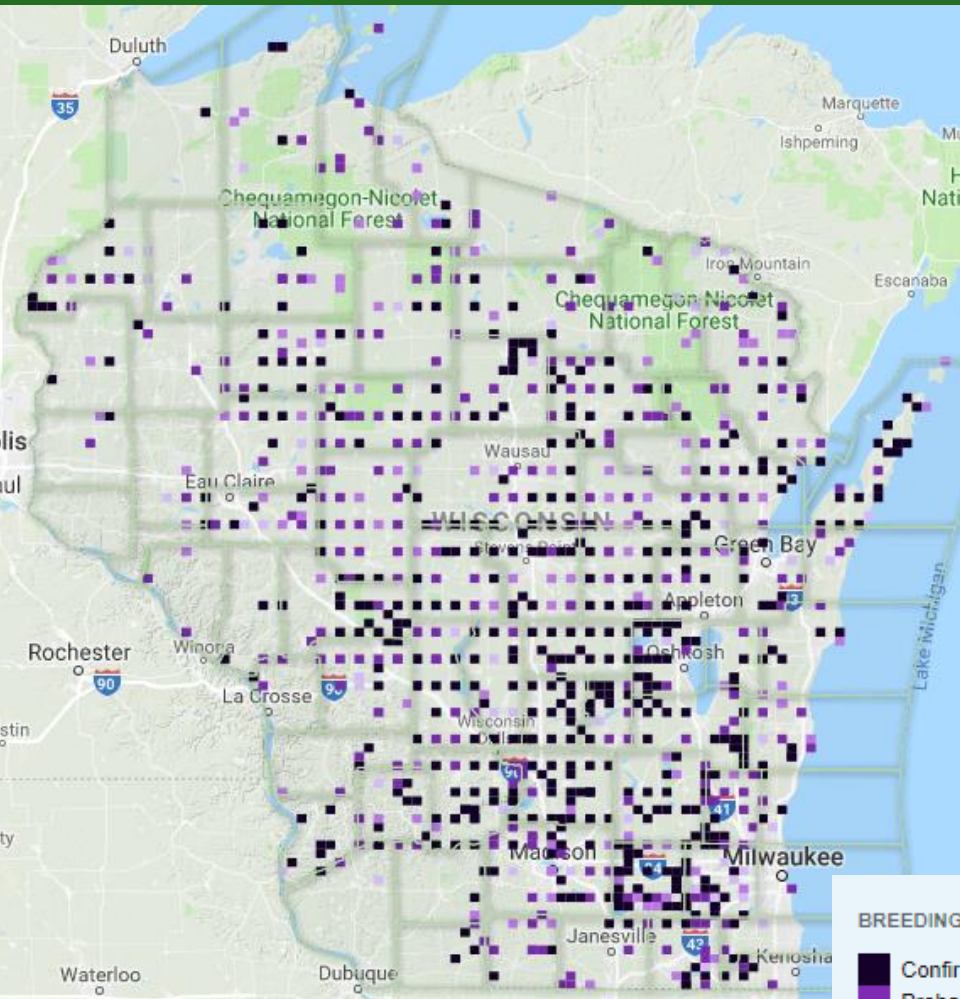


Joel Trick

# Results to date

## Atlas I

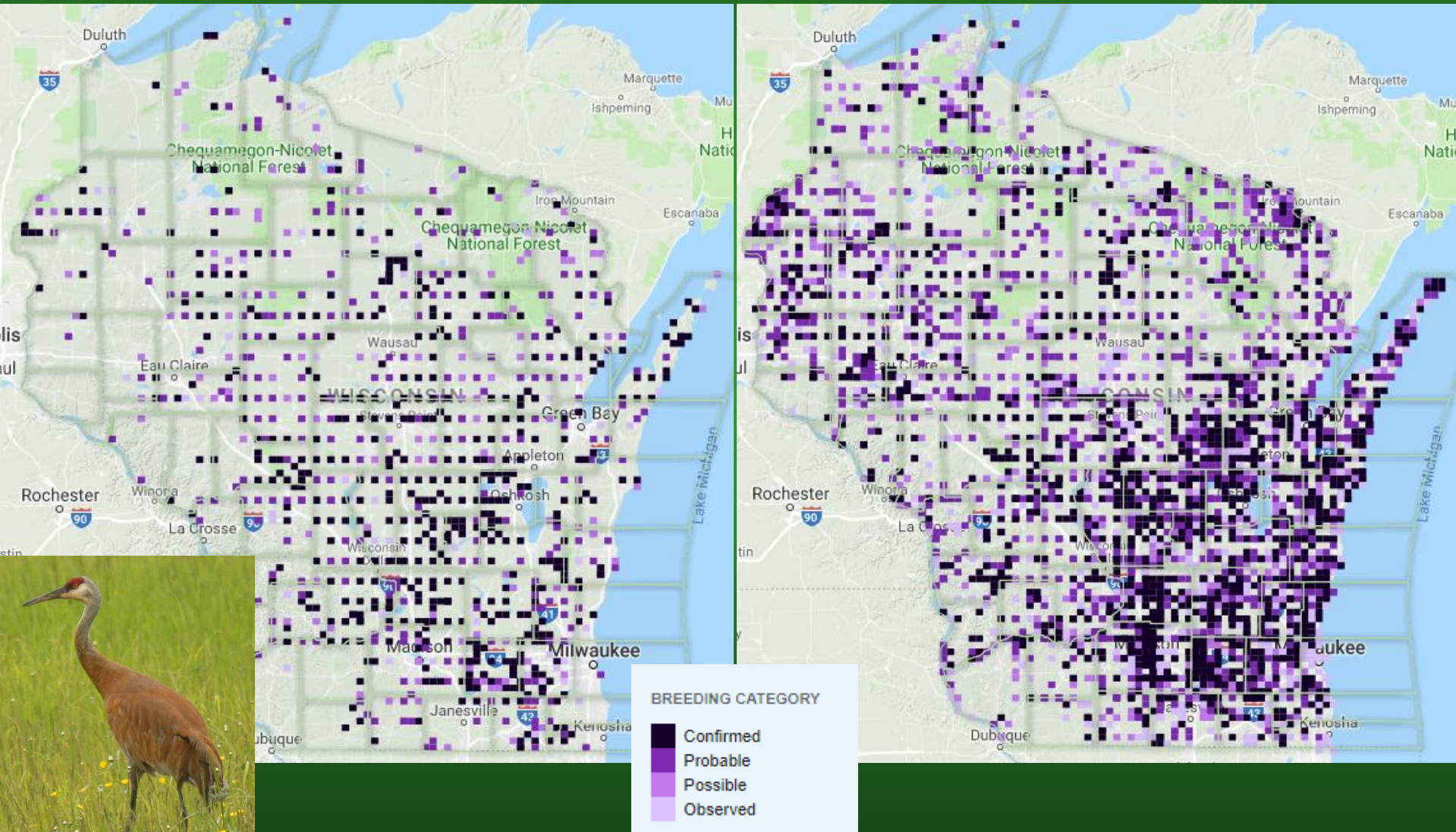
## Atlas II



# Results to date

## Atlas I

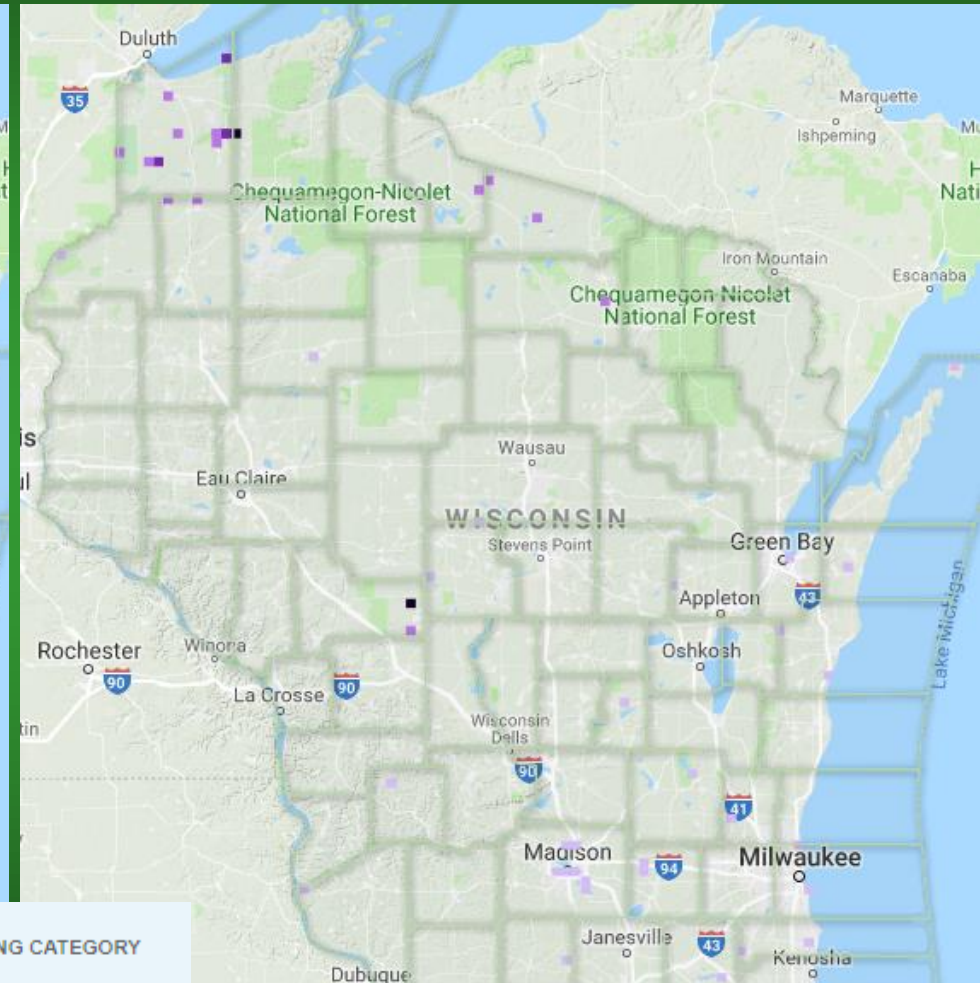
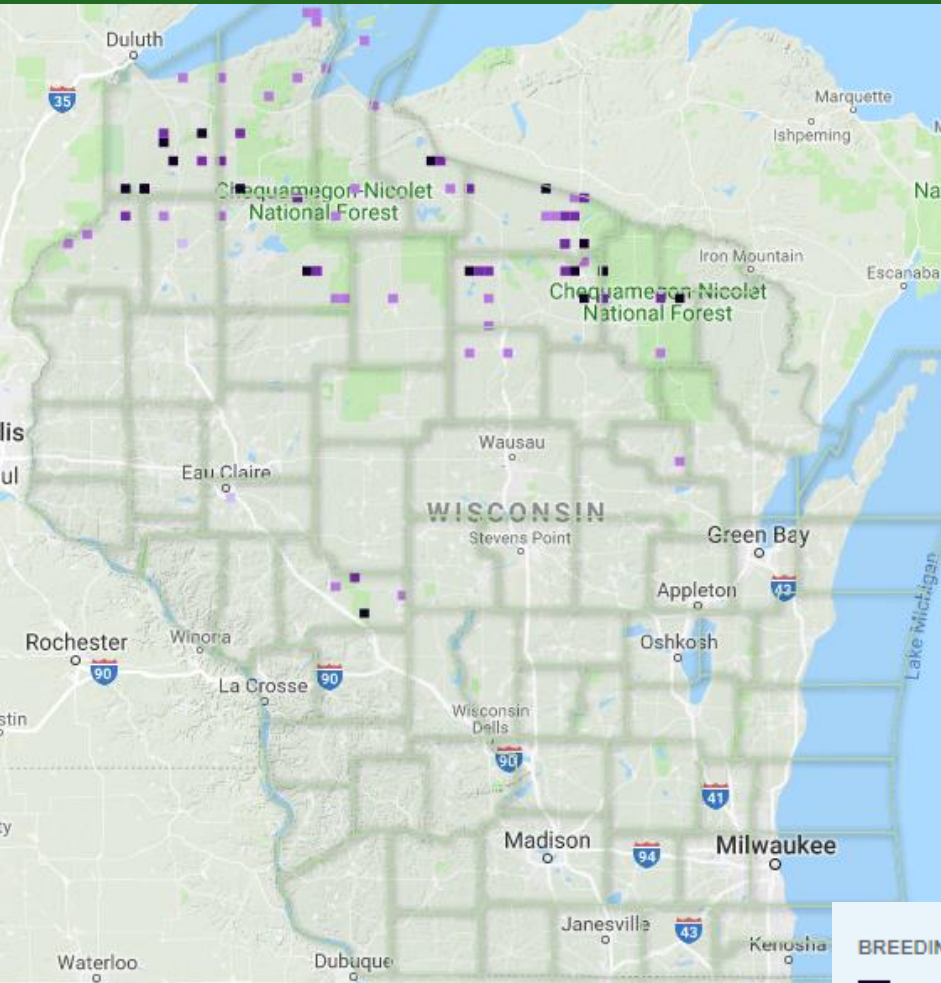
## Atlas II



# Results to date

## Atlas I

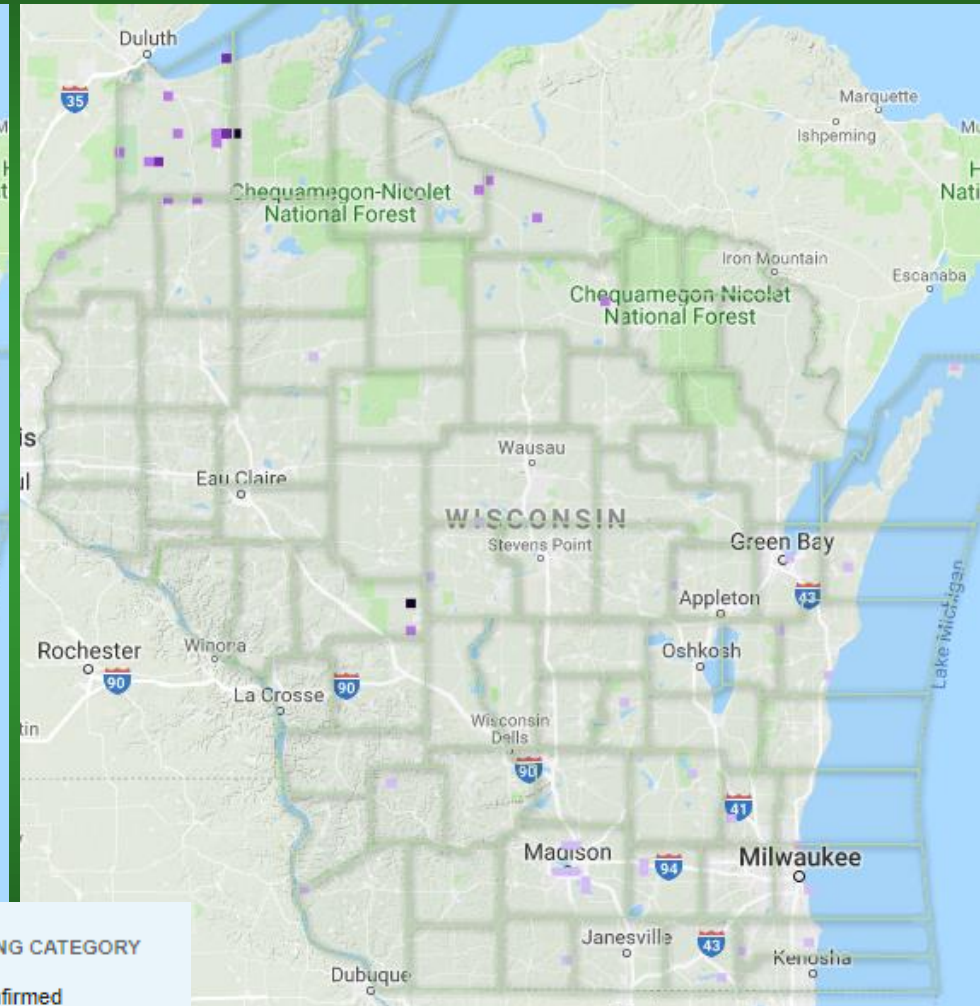
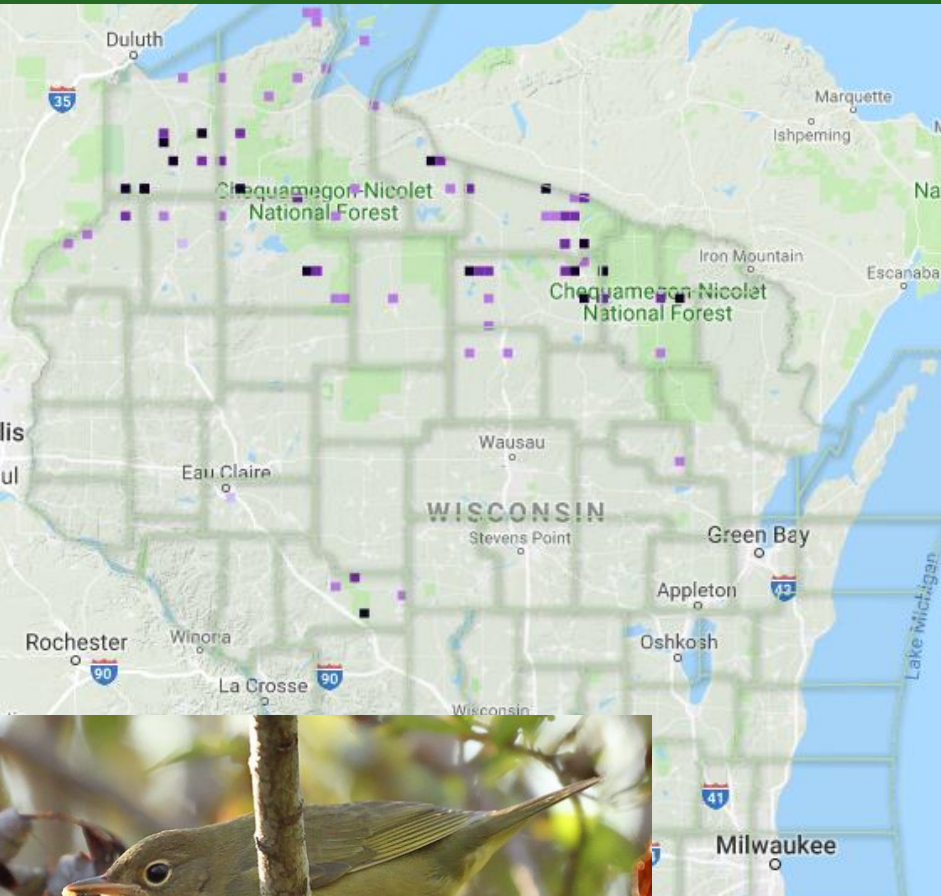
## Atlas II



# Results to date

## Atlas I

## Atlas II



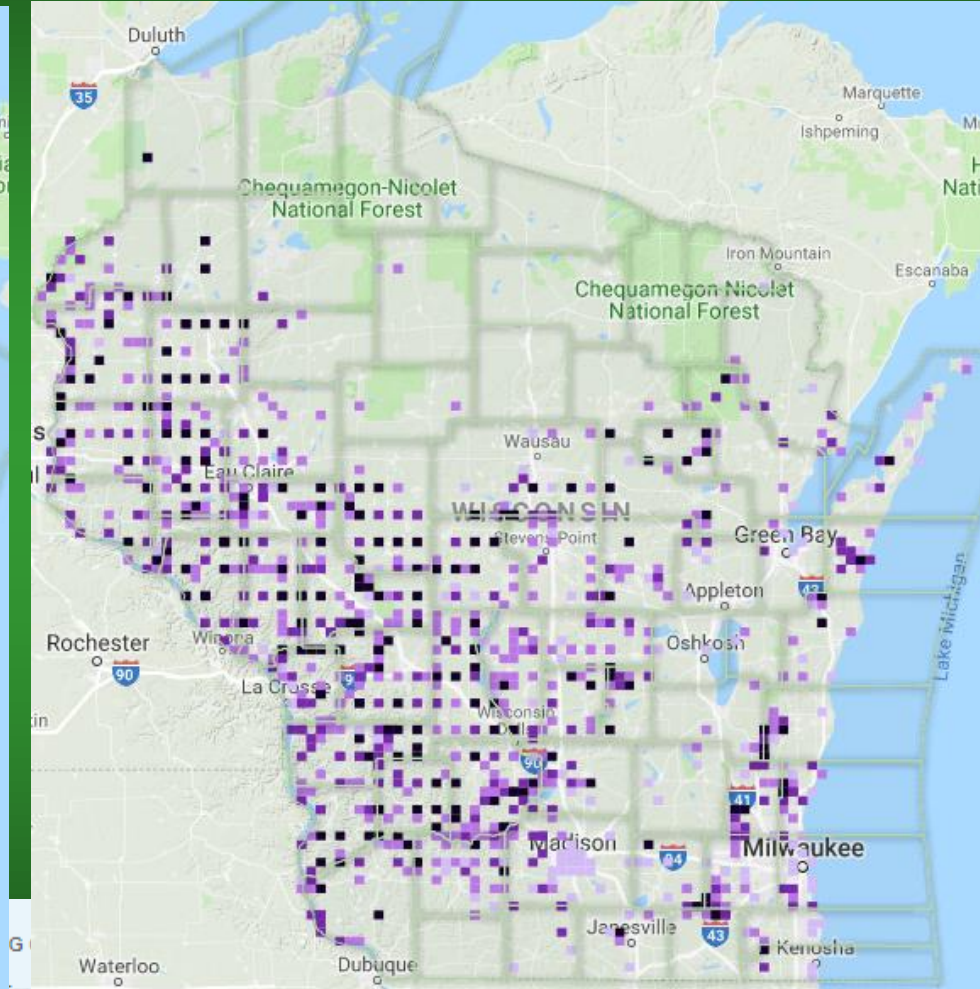
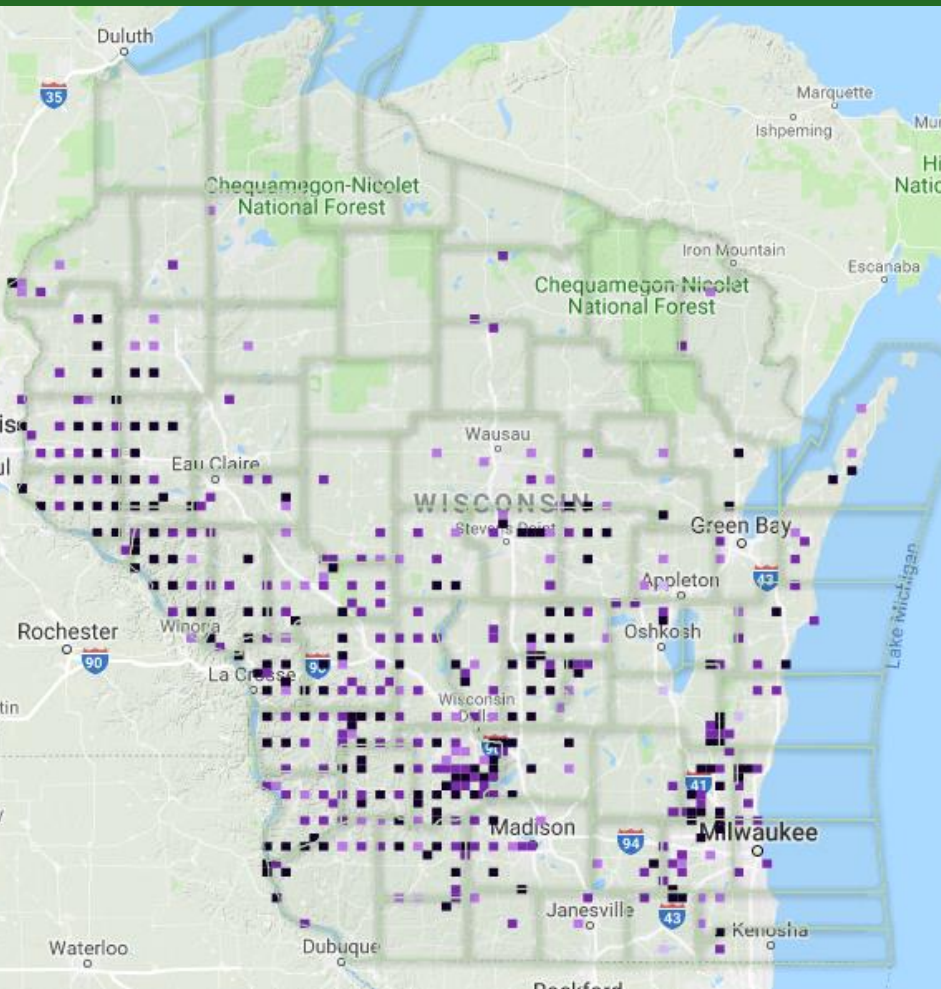
**BREEDING CATEGORY**

■	Confirmed
■	Probable
■	Possible
■	Observed

# Results to date

## Atlas I

## Atlas II



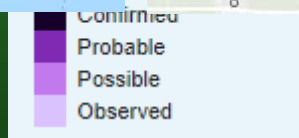
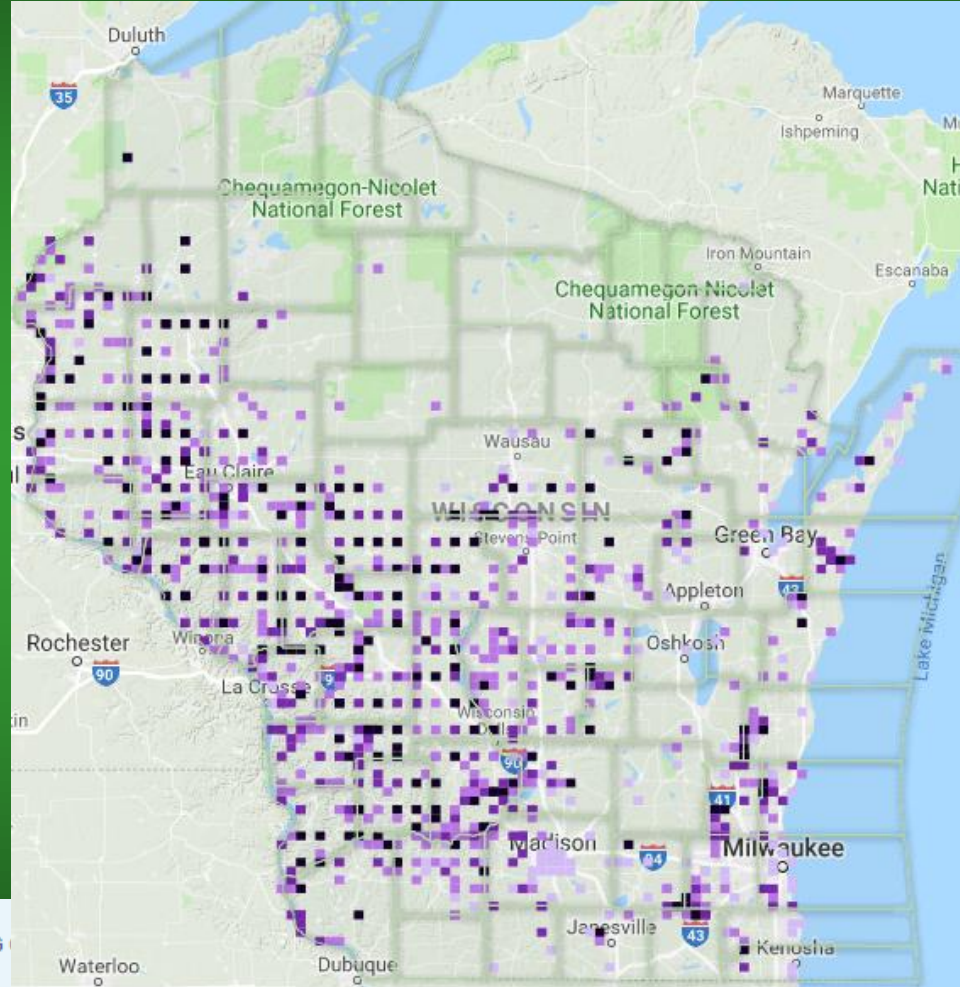
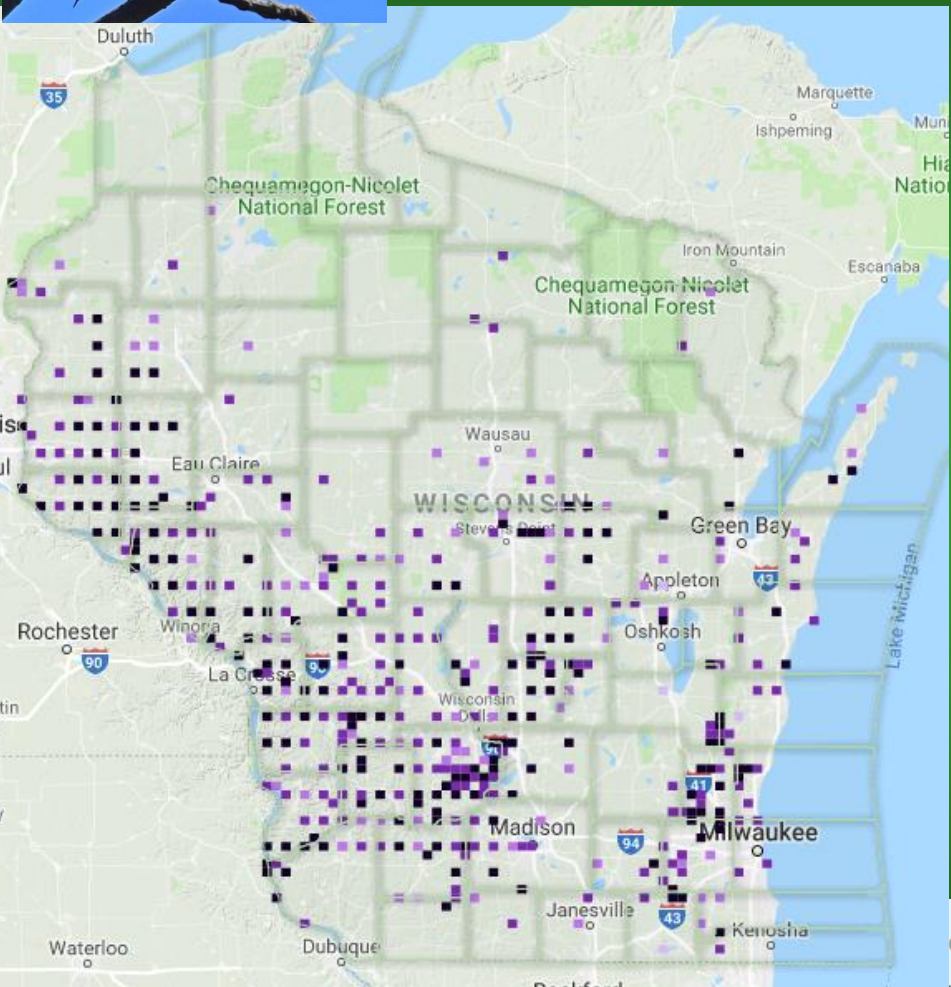
- Confirmed
- Probable
- Possible
- Observed



# Results to date

## Atlas I

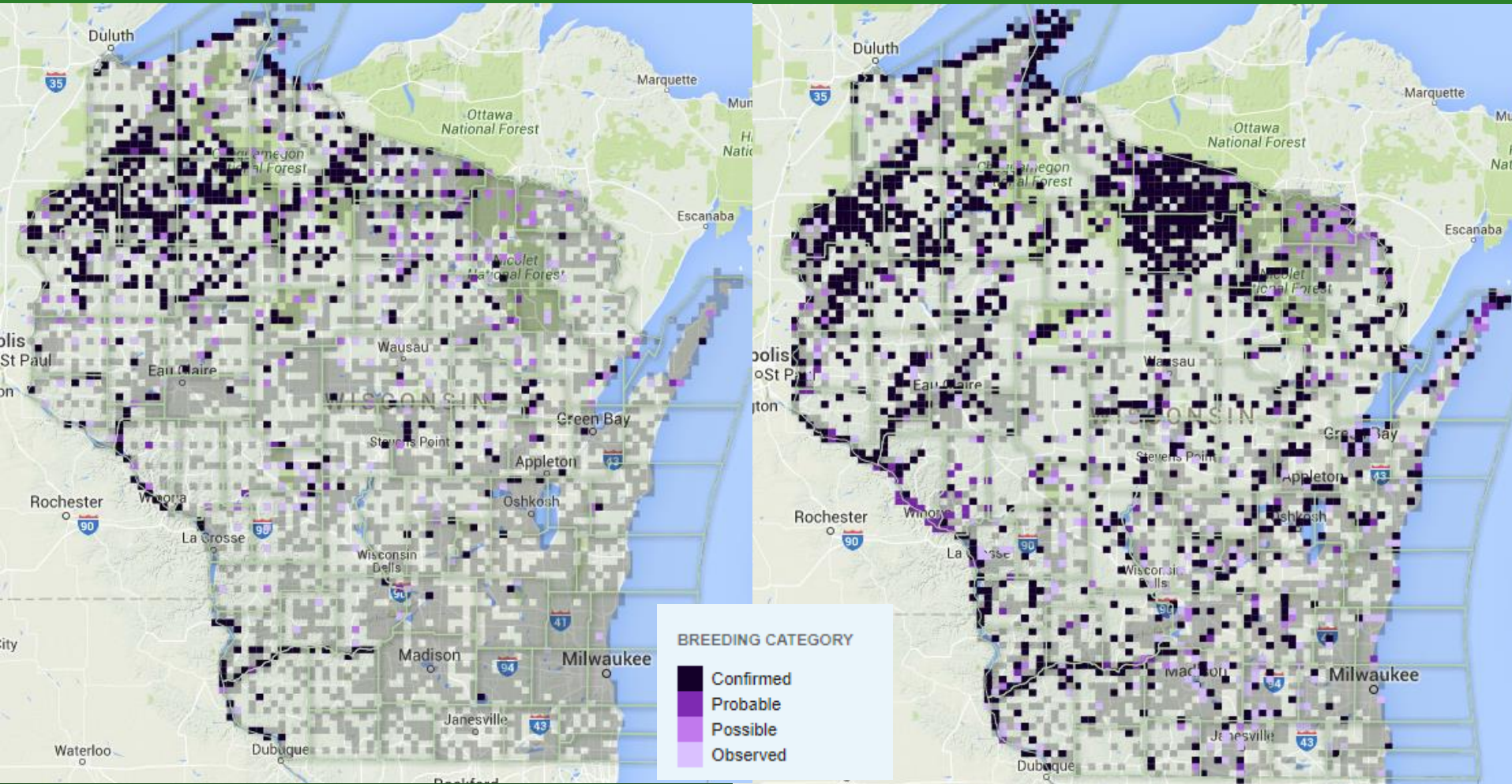
## Atlas II



# Map Quiz – Change between Atlases

WBBA I

WBBA II

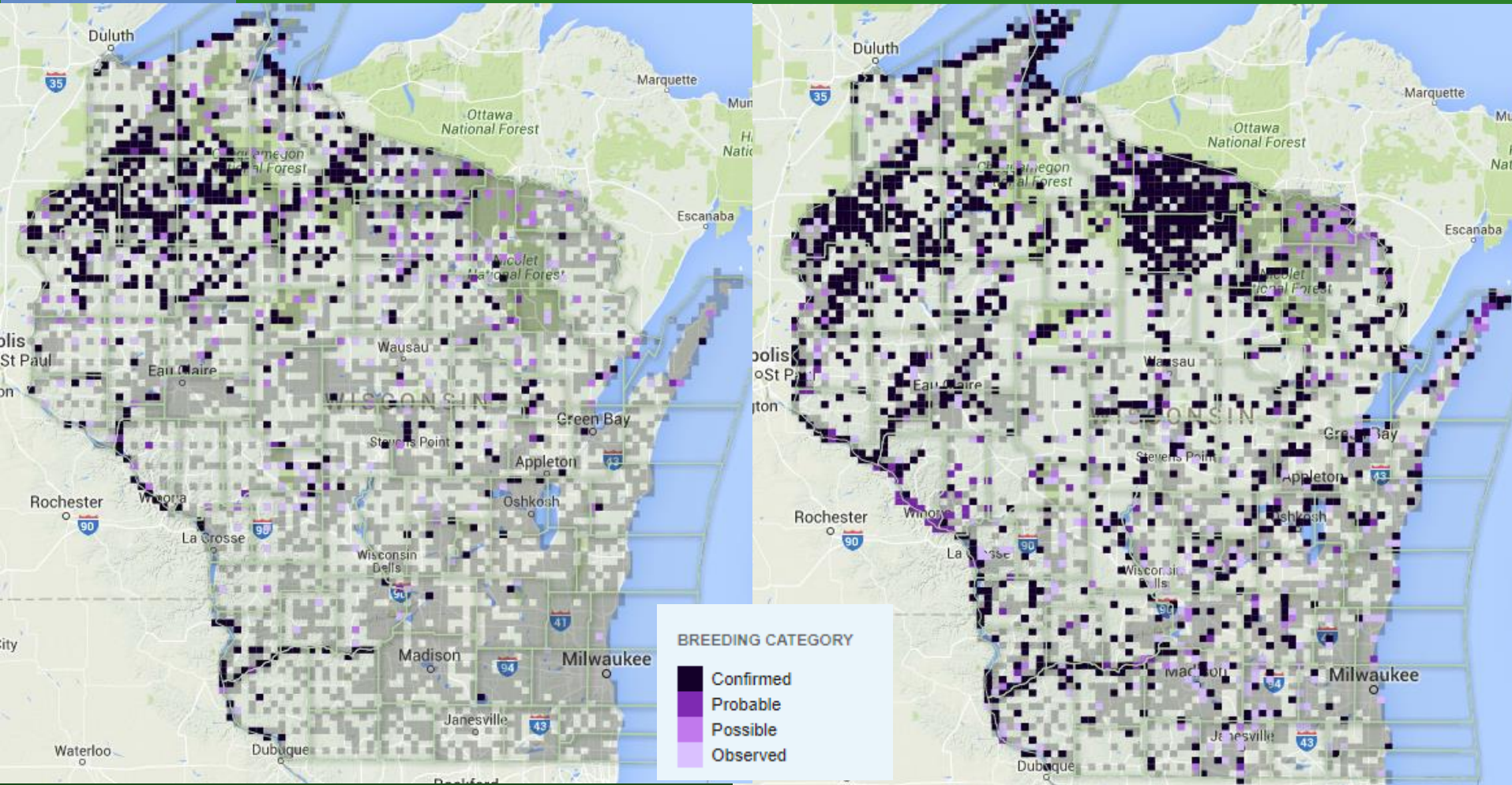




# Map Quiz – Change between Atlases

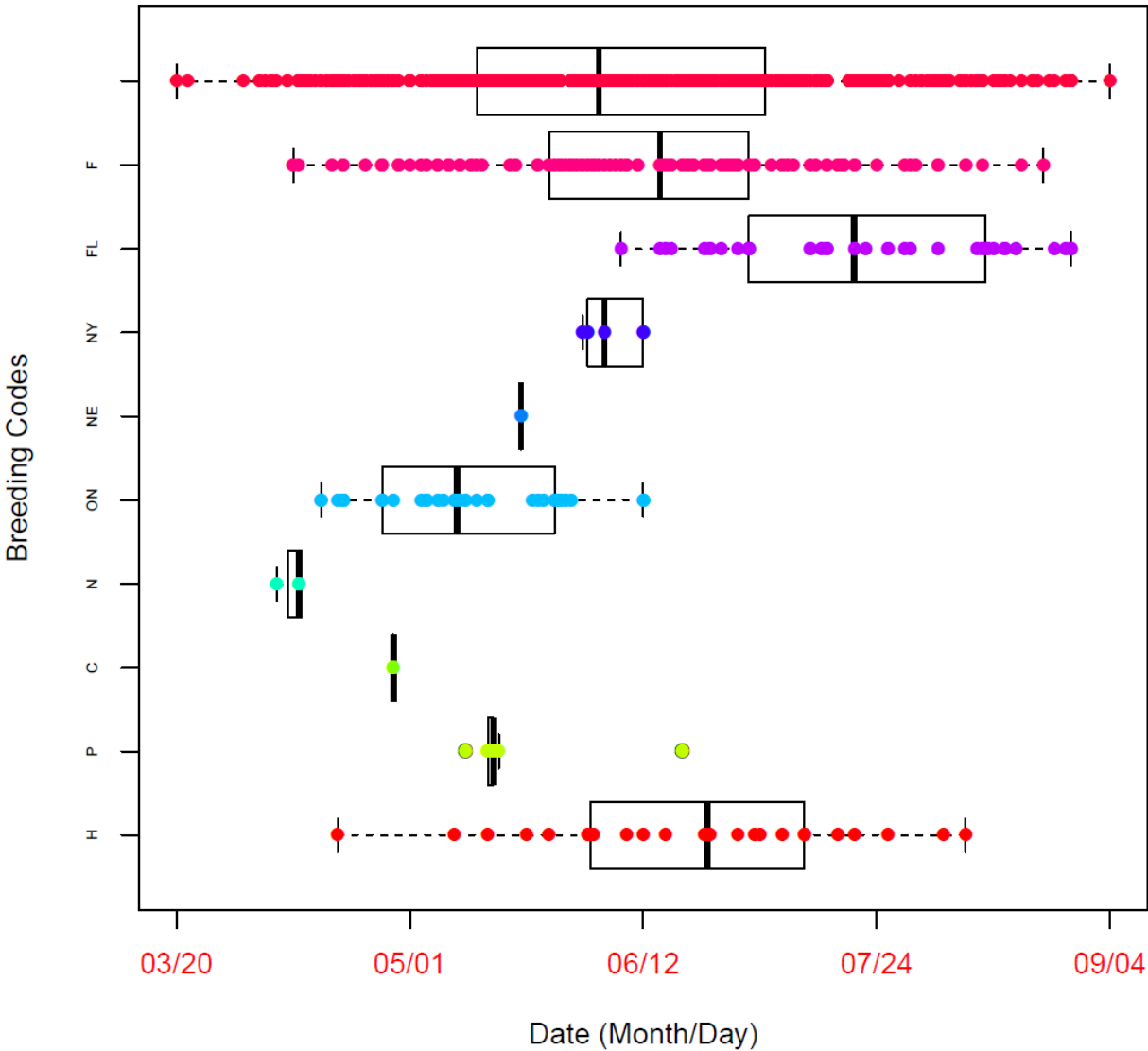
WBBA I

WBBA II

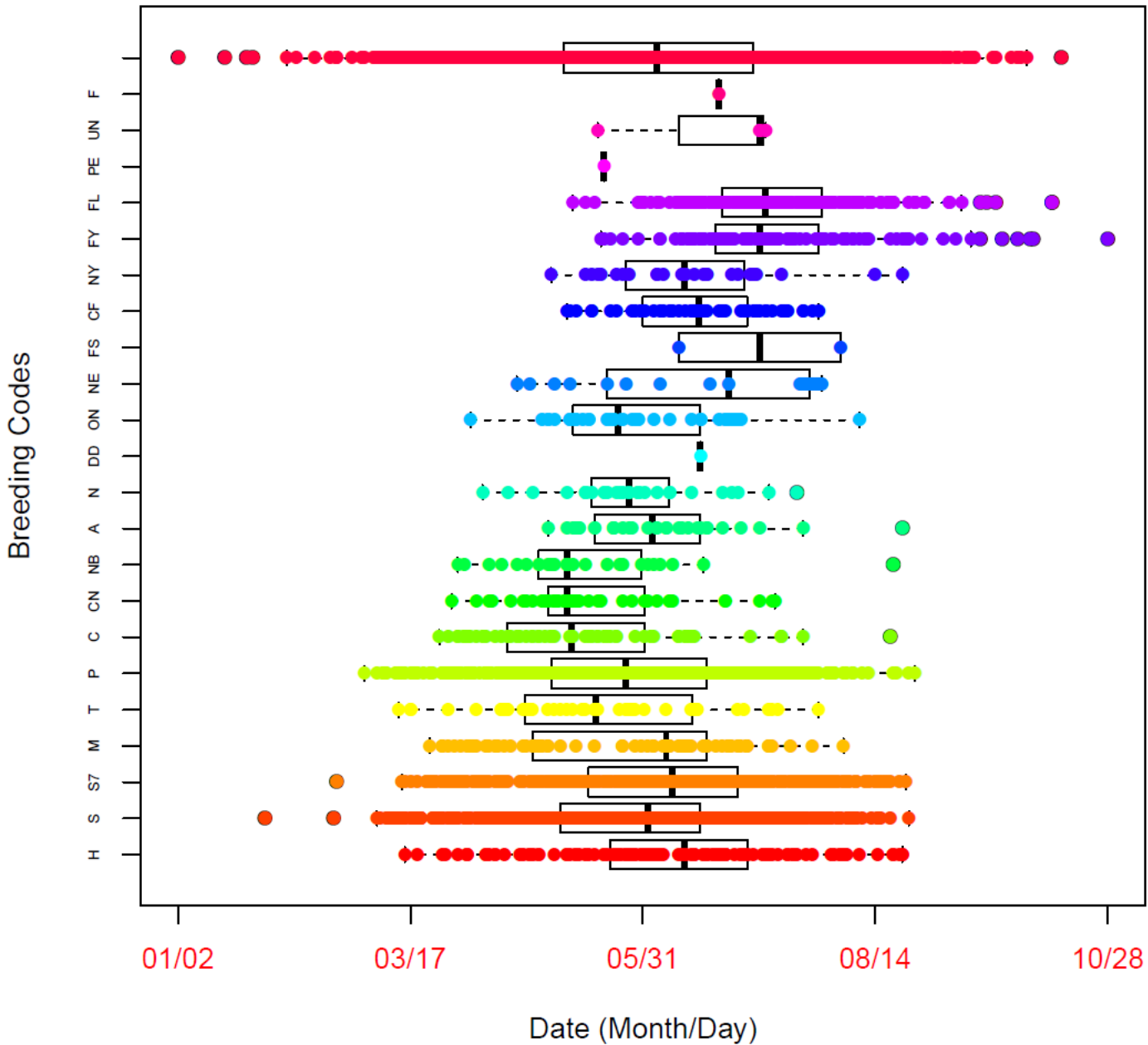


# Breeding Chronology

American White Pelican



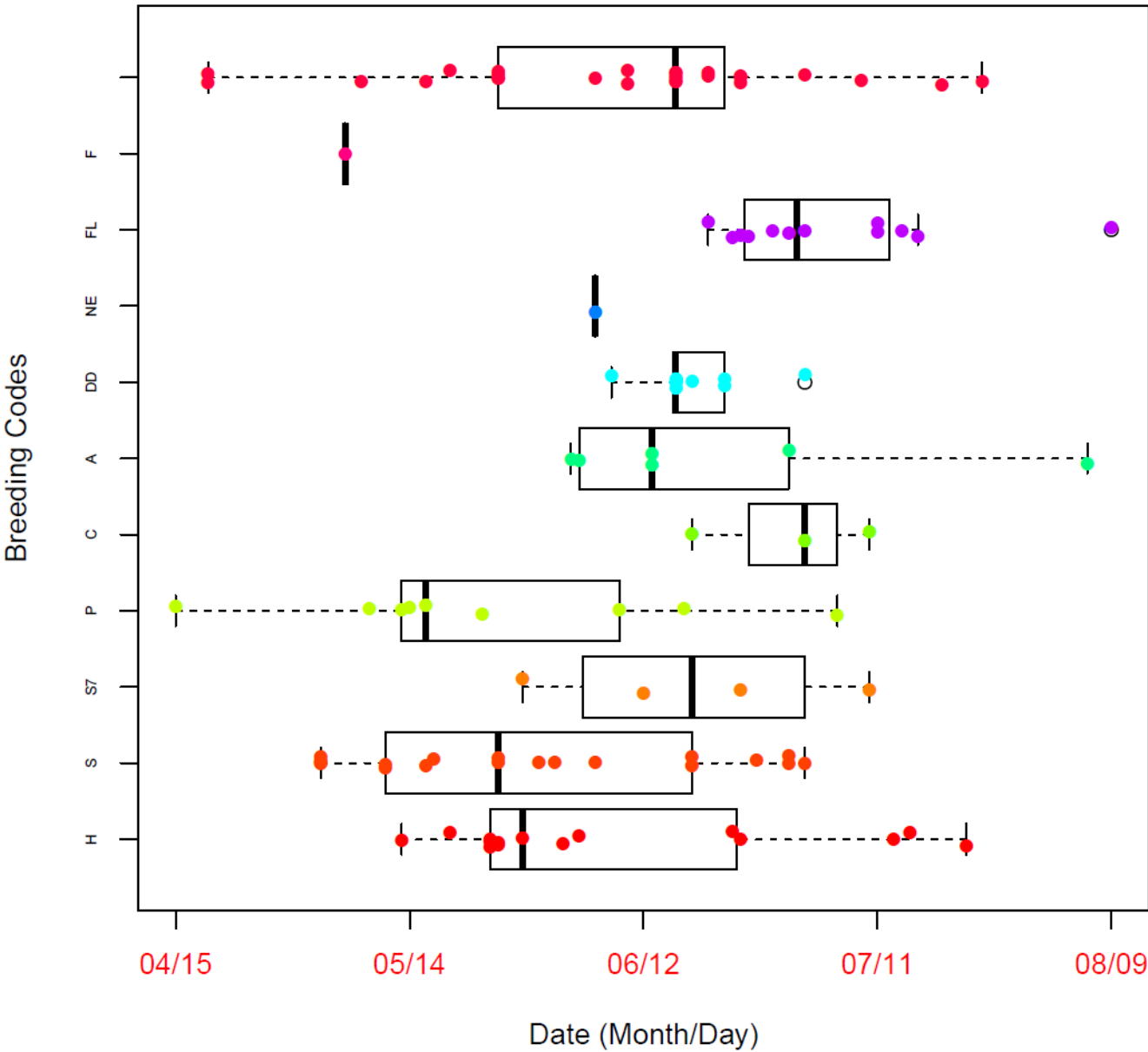
# Northern Cardinal



Long  
breeding season



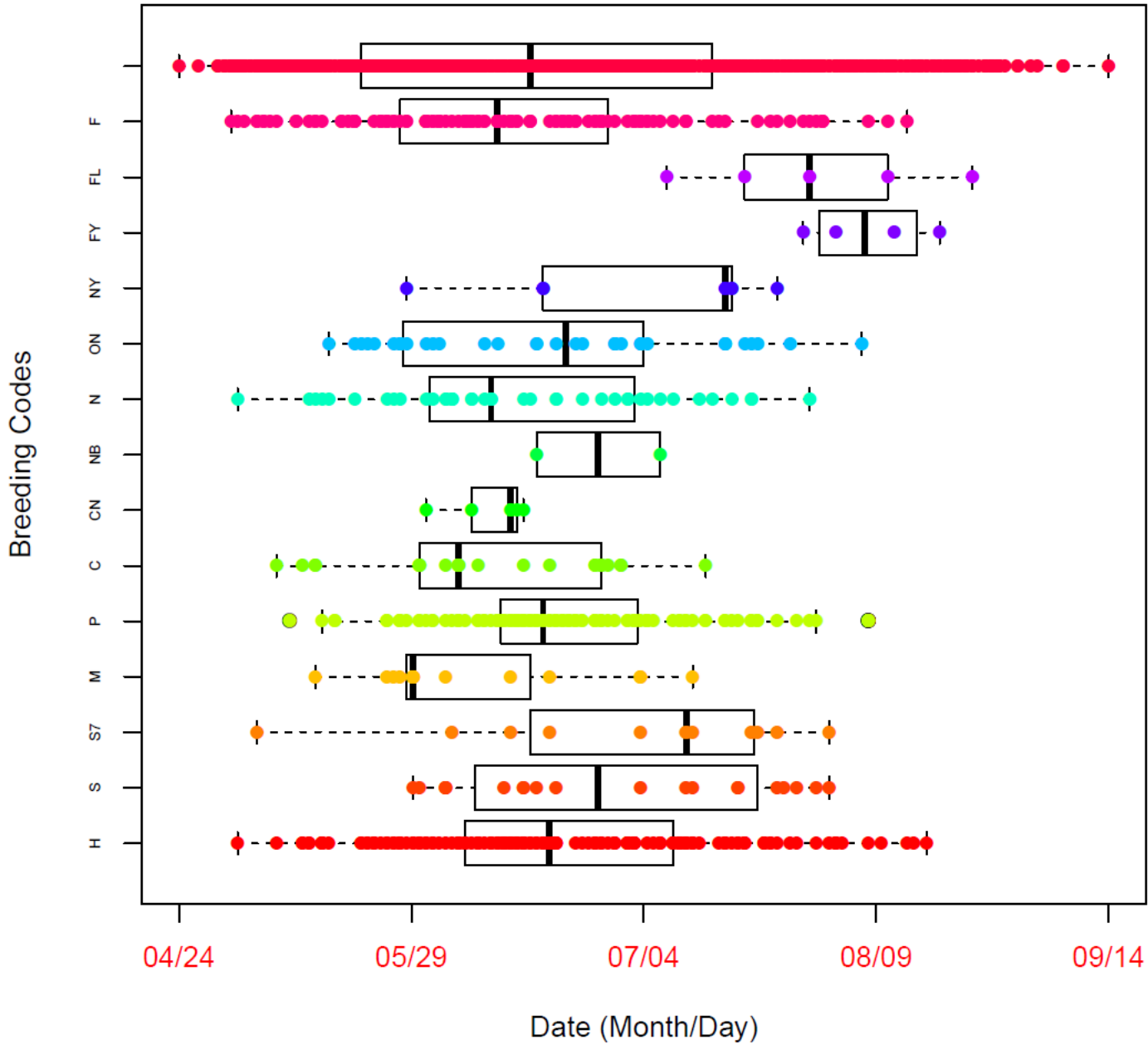
# Upland Sandpiper



Short  
breeding season



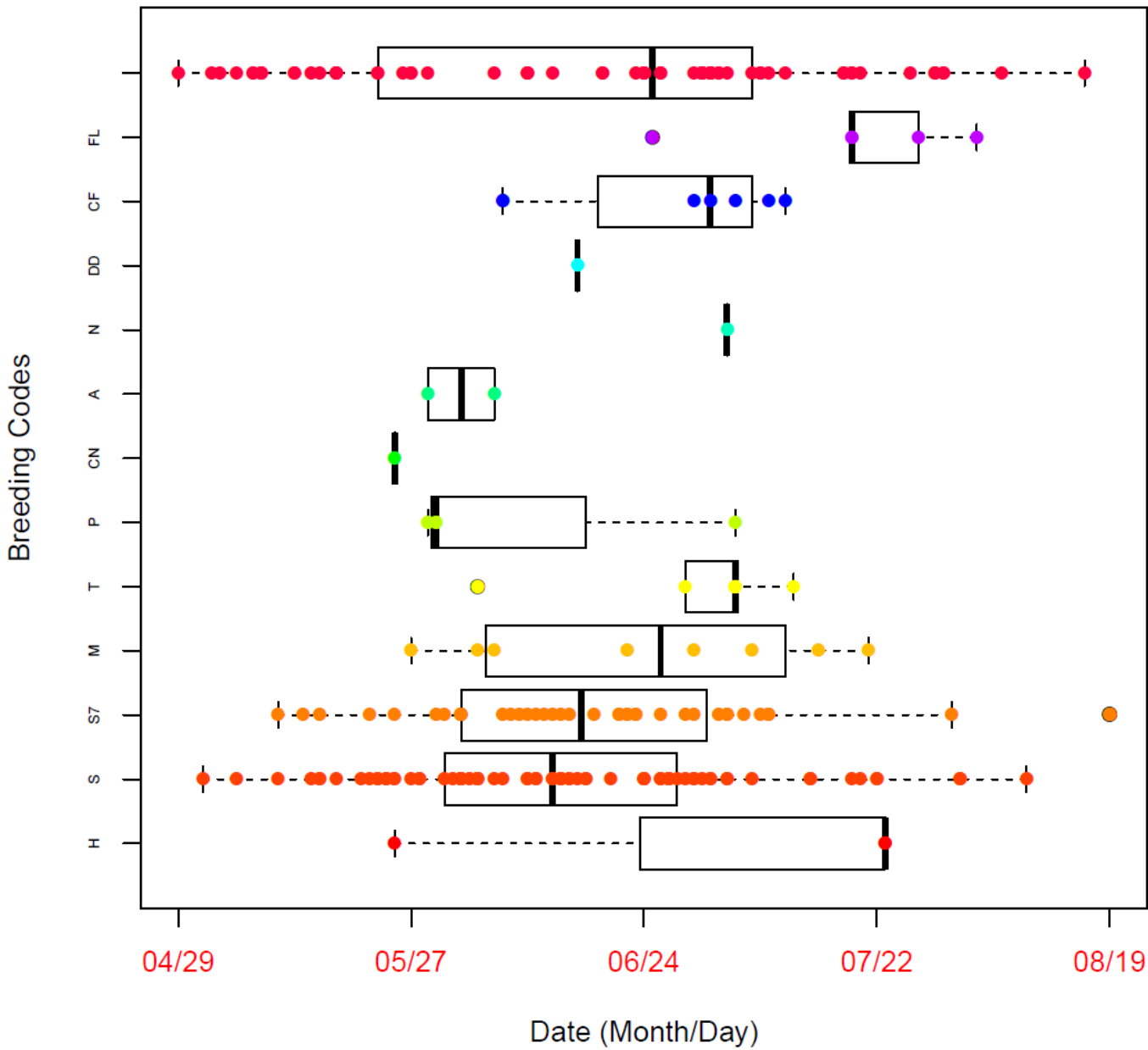
# Chimney Swift



What codes are used for confirmation?



# Henslow's Sparrow

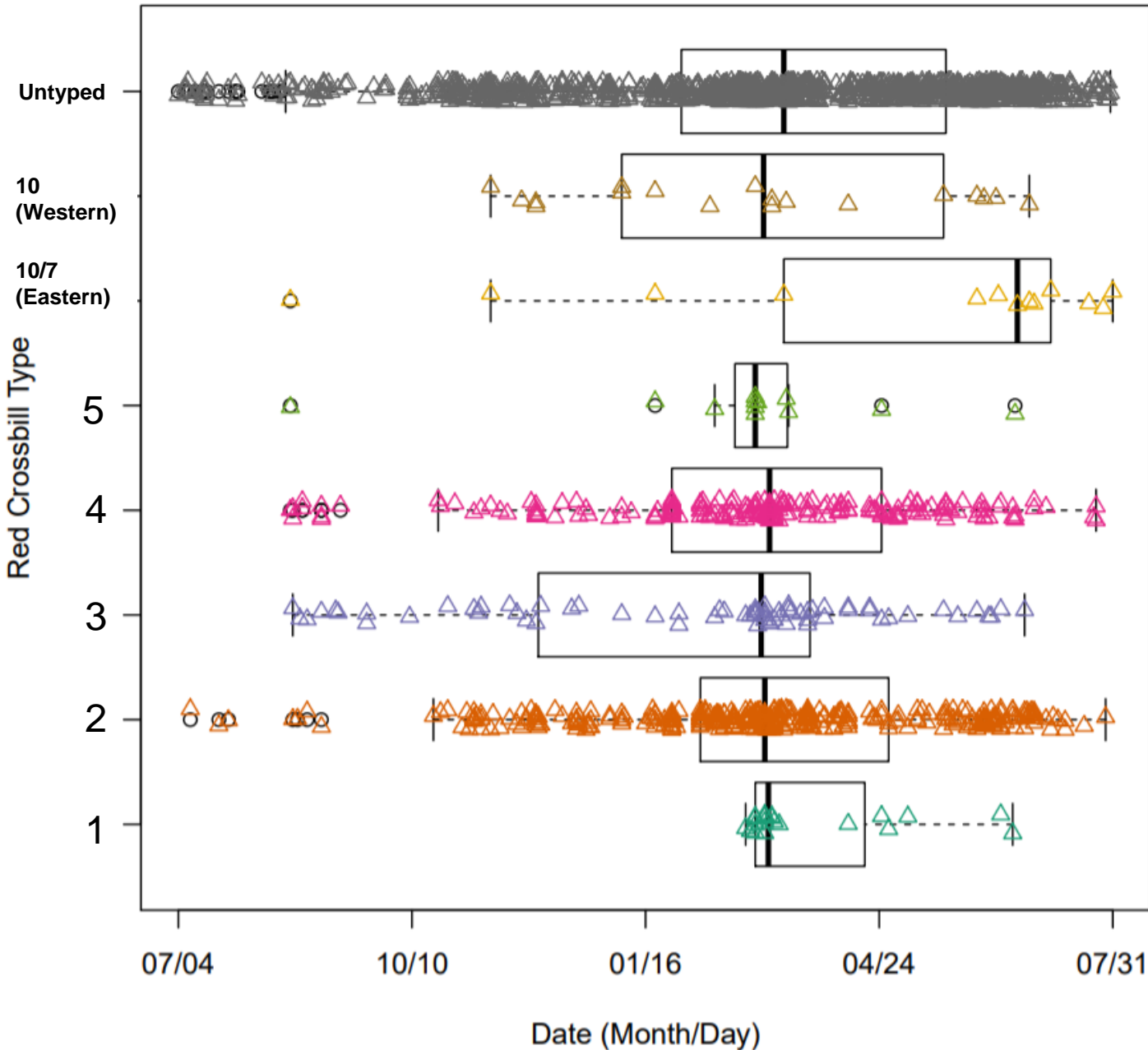


When are birds out of the nest?  
(avoid haying)



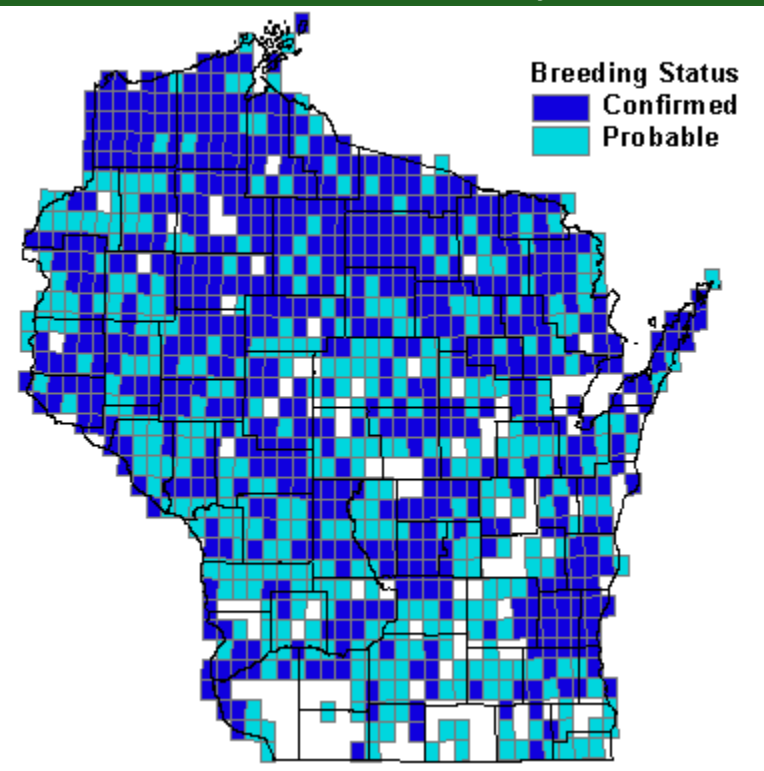
# Red Crossbill

## Red Crossbill Occurrence in WI by Type 2017–2018

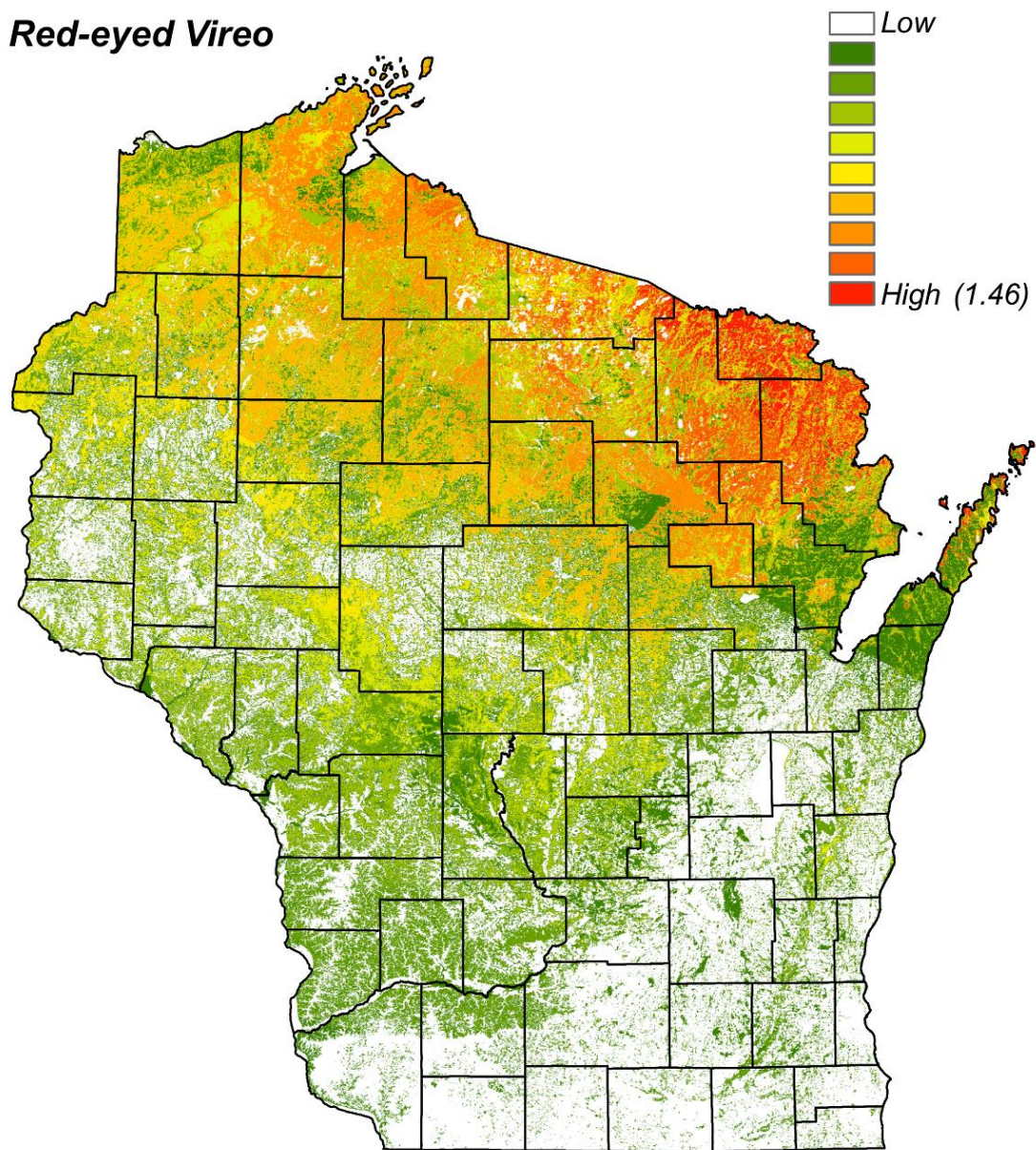


Birds are present (it's unclear how many)

But numbers of birds vary within region of occurrence



*Red-eyed Vireo*





# Point Counts

2016–2019

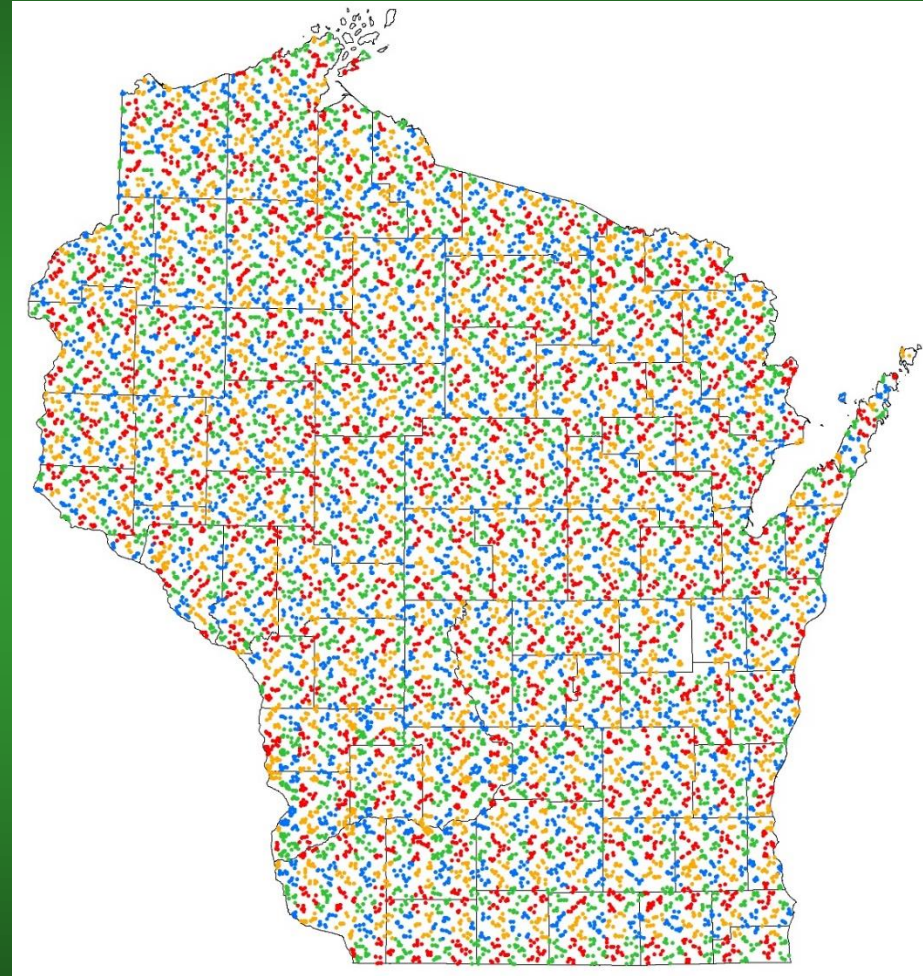
Roadside, 10-minute stationary counts

Highly skilled ear birders  
(WDNR/Hires/Hotshot Vol)

In 50% of blocks, 16,000+ pts

Unlike WBBA I, model  
abundance for 100+ species

Population size, density maps



<u>Species</u>	<u>Number detected in 2018</u>
Red-winged Blackbird	7560
American Robin	6082
European Starling	4313
Song Sparrow	4061
Red-eyed Vireo	3958
House Sparrow	3469
Canada Goose	3468
American Crow	3464
Ovenbird	3111
Chipping Sparrow	3101

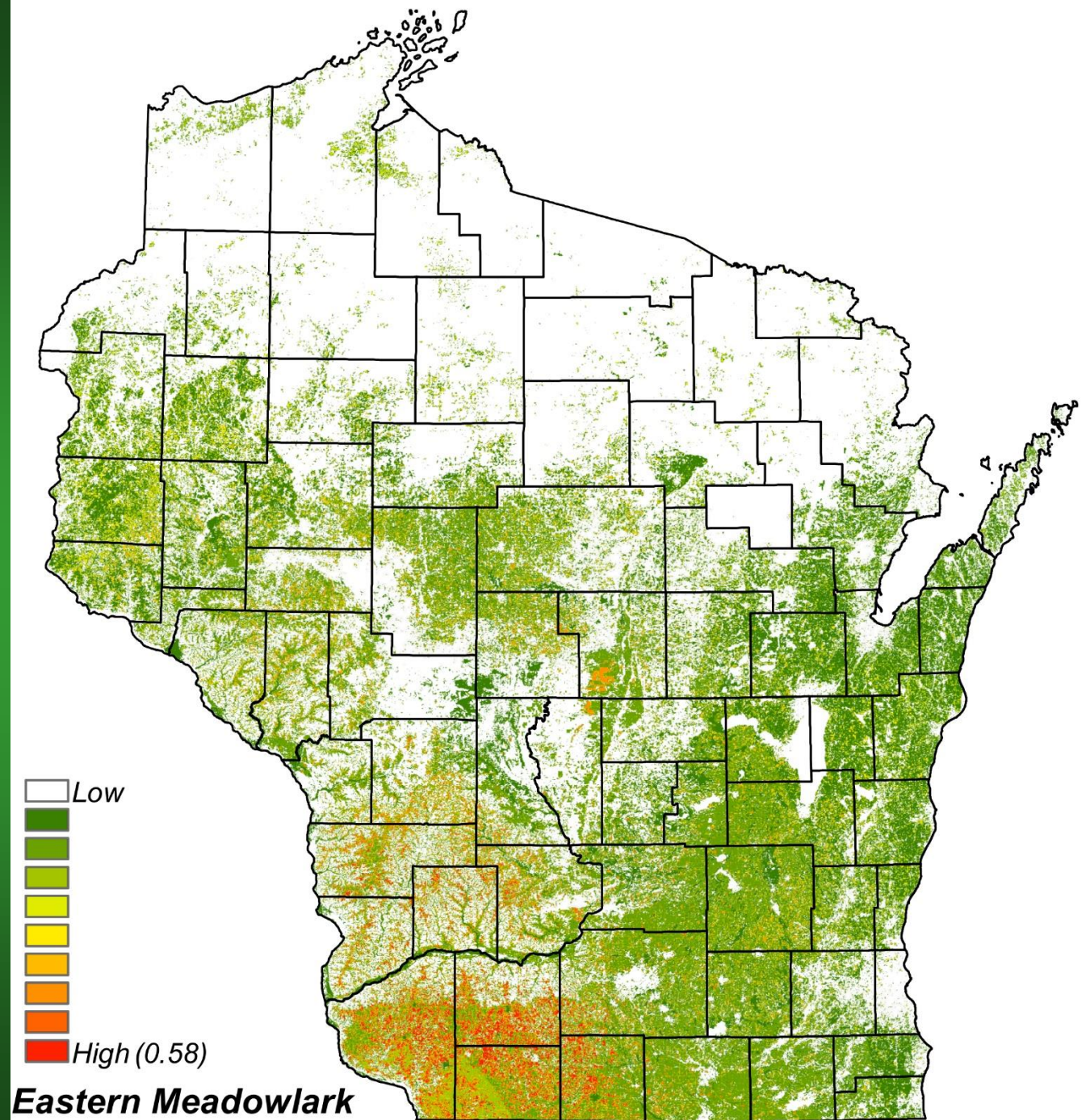


<b><u>Northern Forest Species</u></b>	
Pine Warbler	1289
Golden-winged Warbler	549
Blackburnian Warbler	392
Golden-crowned Kinglet	268
Northern Parula	233
Blue-headed Vireo	199
Magnolia Warbler	142
Northern Waterthrush	139
Yellow-bellied Flycatcher	134
Canada Warbler	133
Lincoln's Sparrow	76
Red Crossbill	466
Black-throated Blue Warbler	54
Palm Warbler	52
Cape May Warbler	49
Ruby-crowned Kinglet	11
Olive-sided Flycatcher	11
Evening Grosbeak	6
Connecticut Warbler	5
Swainson's Thrush	5
Gray Jay	4
<b><u>Southern Forest Species</u></b>	
Acadian Flycatcher	43
Cerulean Warbler	32
Hooded Warbler	22
Louisiana Waterthrush	1

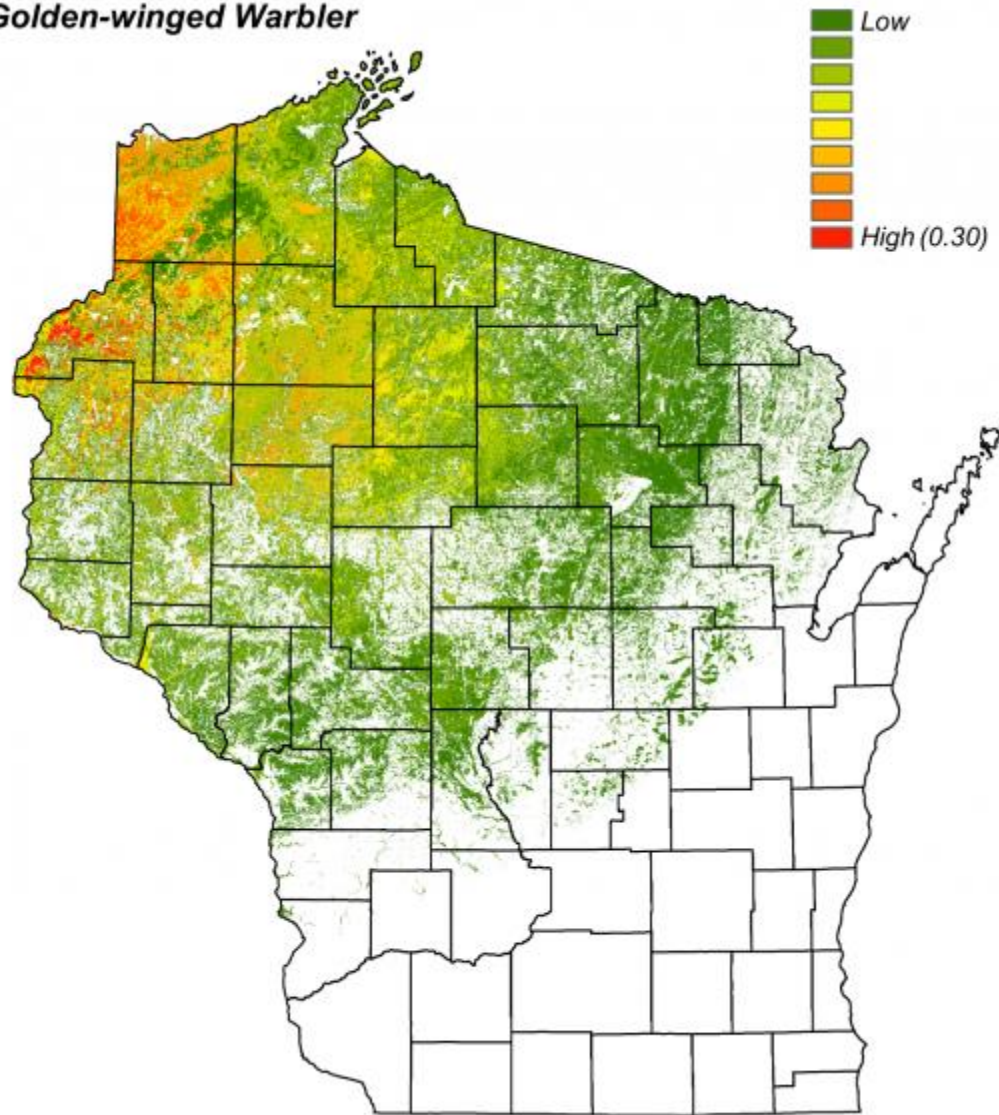
# Extra points to boost forest species



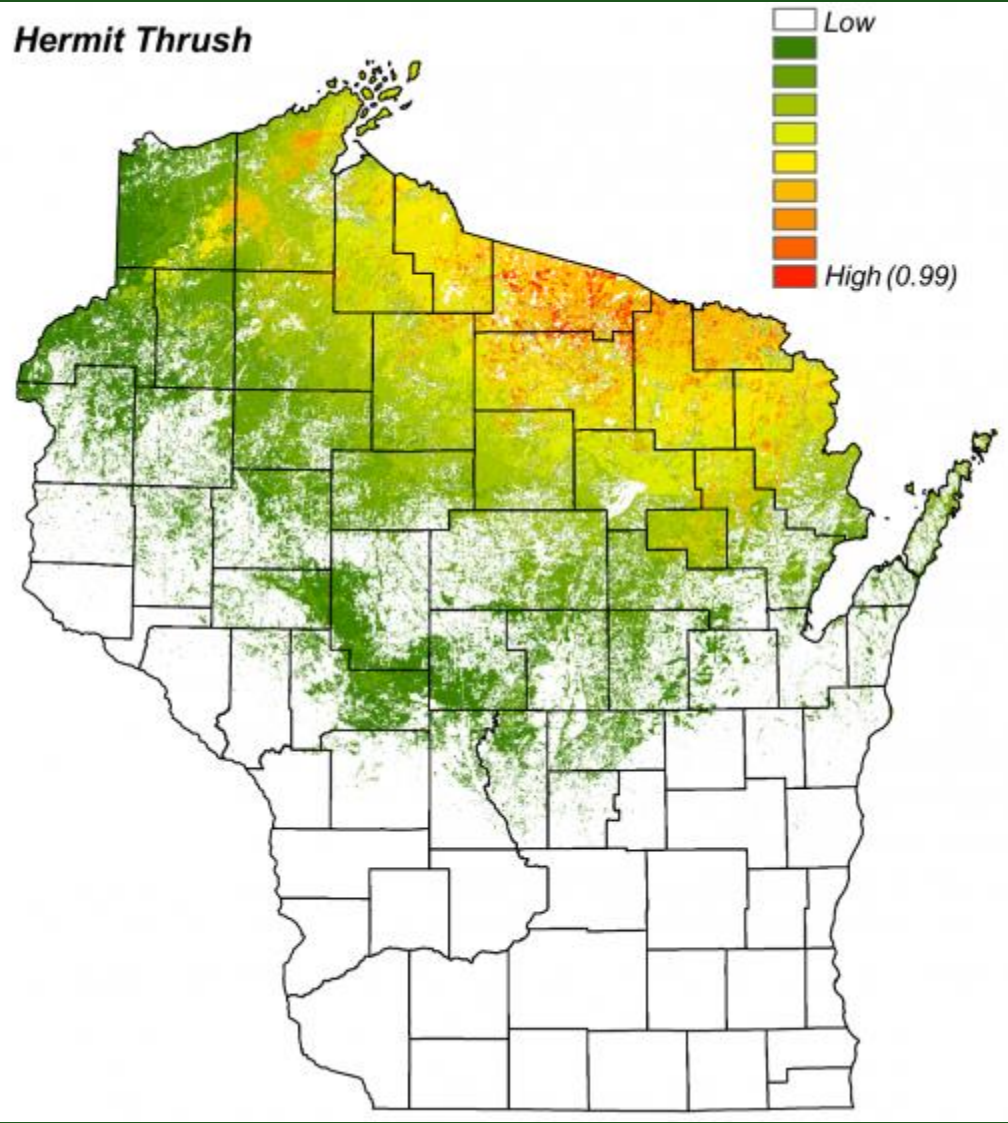
Dr. Jenny  
McCabe



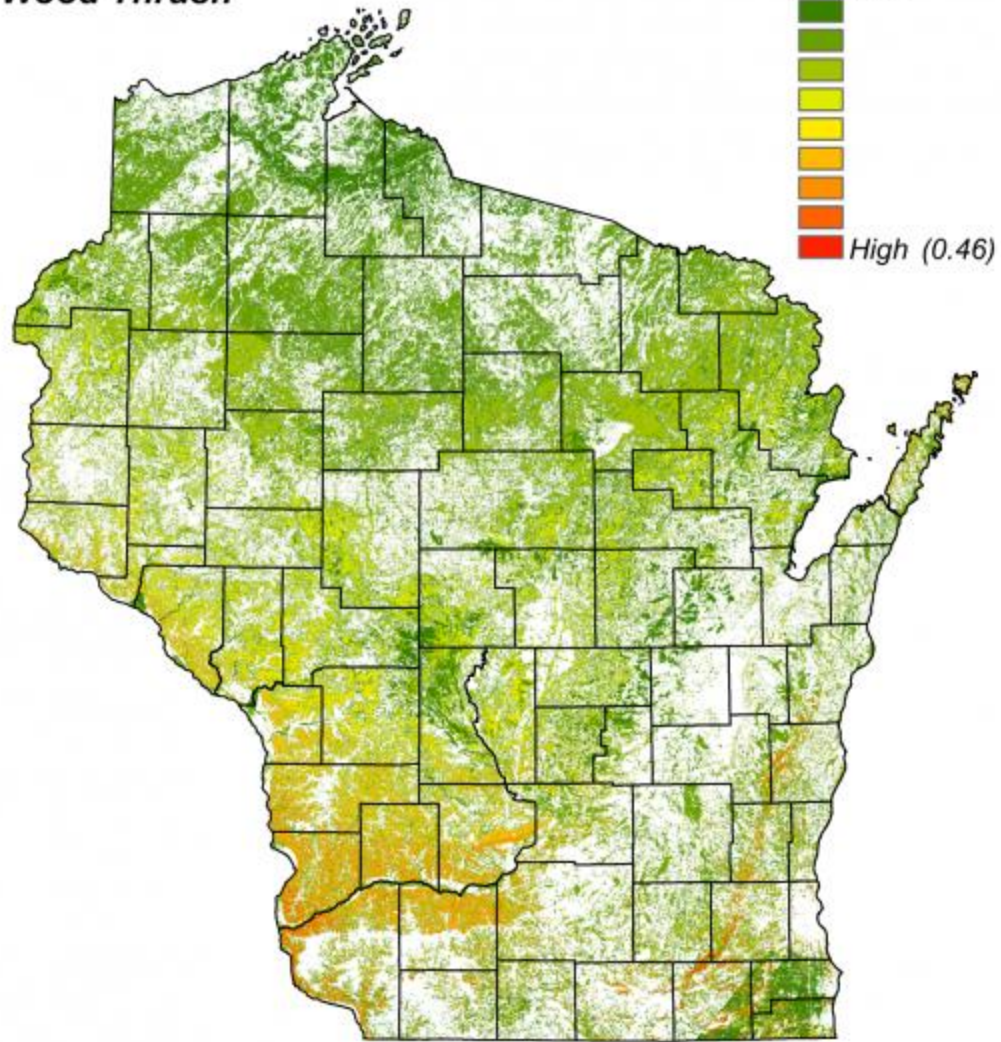
# Golden-winged Warbler



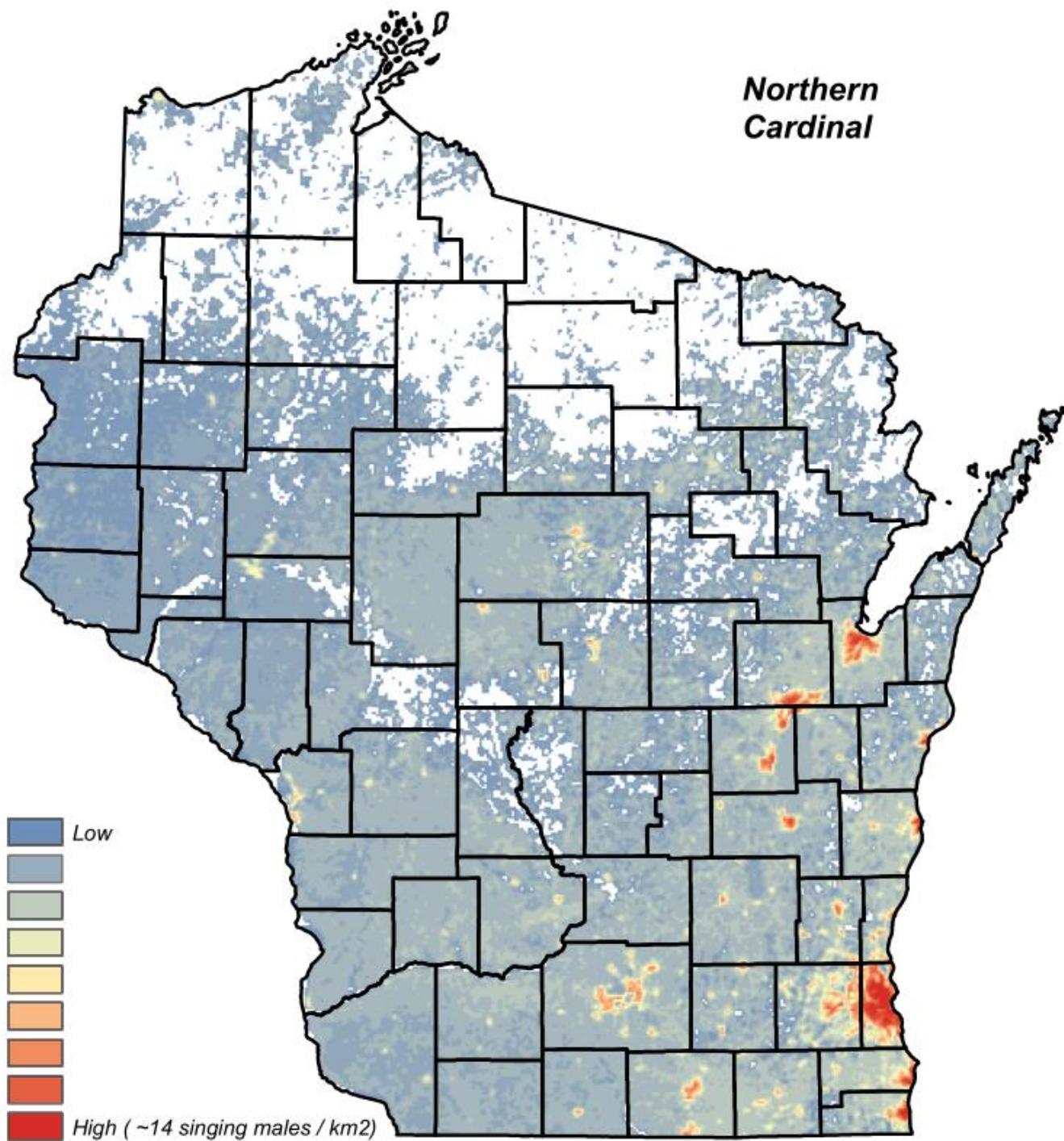
# Hermit Thrush



# Wood Thrush

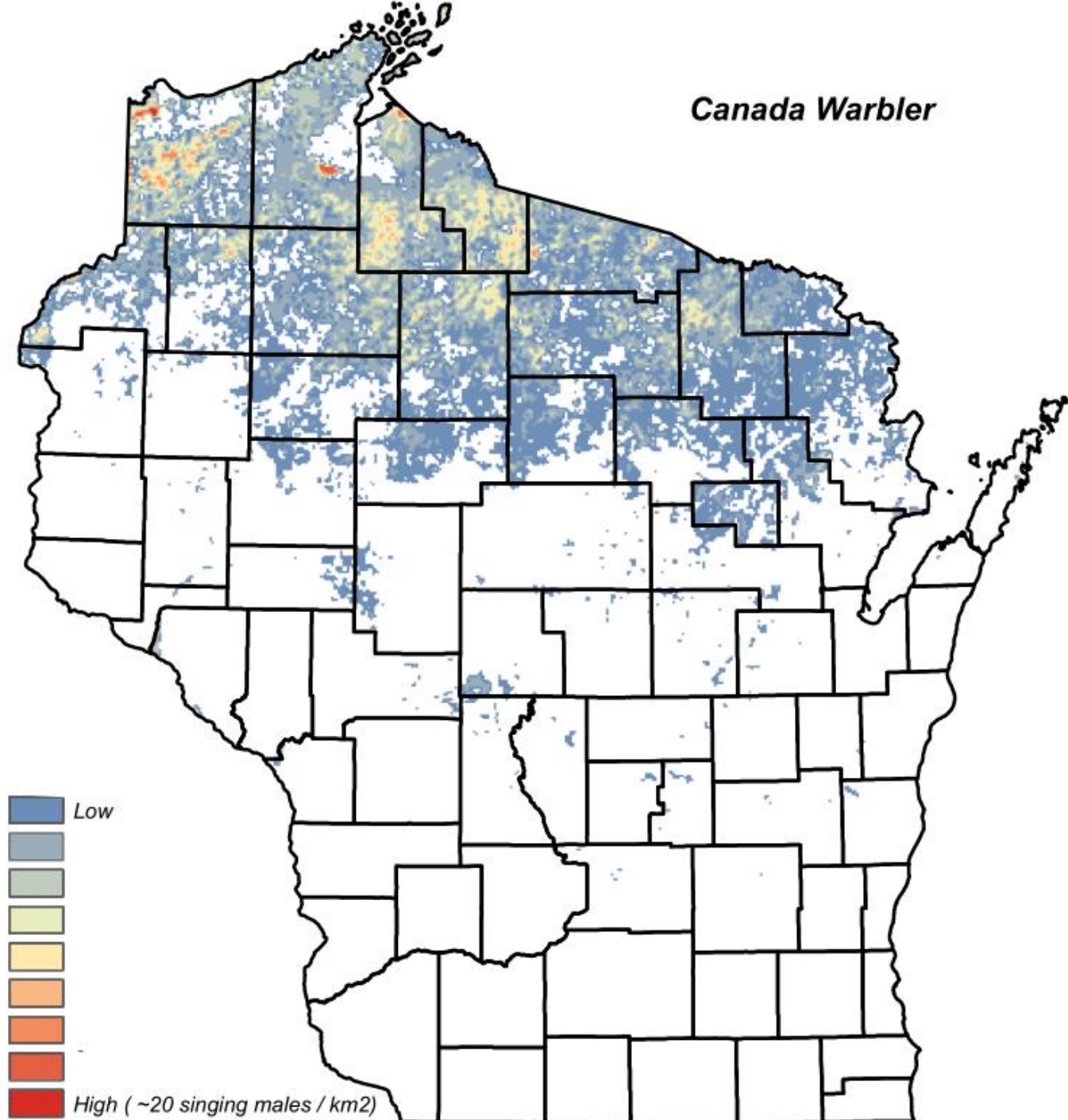


**Northern  
Cardinal**





# Canada Warbler



# White-throated Sparrow

